

Product datasheet for TP310416

PDE7B (NM_018945) Human Recombinant Protein

Product data:

Product Type:	Recombinant Proteins
Description:	Recombinant protein of human phosphodiesterase 7B (PDE7B), 20 µg
Species:	Human
Expression Host:	HEK293T
Expression cDNA Clone or AA Sequence:	>RC210416 protein sequence Red =Cloning site Green =Tags(s)

MSCLMVERCGEILFENPDQNAKCVCM LGDIRLRGQTGVRAERRGSYPFIDFRLLNSTTYSGEIGTKKKVK
RLLSFQRYFHASRLLRG IIPQAPLHLLDEDYLGQARHMLS KVGMMWDFDIFLFDRLTNGNSLVTLLCHLFN
THGLIHFFKLD MVT LHRFLVMVQEDYHSQNPYHNAVHAADVTQAMHCYLKEPKLASFLTPLDIMLGLLAA
AAHDVDHPGVNQPF LIKTNHHLANLYQNMSVLENHHWRSTIGMLRESRLLAHLPKEMTQDIEQQGLSLIL
ATDINRQNEFLTRLKAHLHNKDLRLEDAQDRHFMLQIALKCADICNPCR IWEMSKQWSERVCEEFYRQGE
LEQKFELEISPLCNQQKDSIPSIQIGFMSYIVEPLFREWAHFTGNSTLSENMLGHLAHNKAQWKSLLPRQ
HRSRGSSGSGPDHHDHAGQGTESEEQEGDSP

TRTRPLEQKLISEEDLAANDILDYKDDDDKV

Tag:	C-Myc/DDK
Predicted MW:	51.7 kDa
Concentration:	>0.05 µg/µL as determined by microplate BCA method
Purity:	> 80% as determined by SDS-PAGE and Coomassie blue staining
Buffer:	25 mM Tris-HCl, 100 mM glycine, pH 7.3, 10% glycerol
Preparation:	Recombinant protein was captured through anti-DDK affinity column followed by conventional chromatography steps.
Note:	For testing in cell culture applications, please filter before use. Note that you may experience some loss of protein during the filtration process.
Storage:	Store at -80°C.
Stability:	Stable for 12 months from the date of receipt of the product under proper storage and handling conditions. Avoid repeated freeze-thaw cycles.
RefSeq:	<u>NP_061818</u>



[View online »](#)

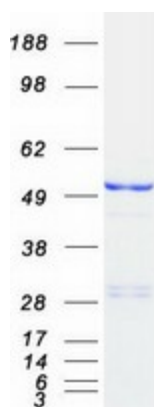
Locus ID: 27115
UniProt ID: [Q9NP56](#)
RefSeq Size: 5385
Cytogenetics: 6q23.3
RefSeq ORF: 1353
Synonyms: bA472E5.1

Summary: The 3',5'-cyclic nucleotides cAMP and cGMP function as second messengers in a wide variety of signal transduction pathways. 3',5'-cyclic nucleotide phosphodiesterases (PDEs) catalyze the hydrolysis of cAMP and cGMP to the corresponding 5'-monophosphates and provide a mechanism to downregulate cAMP and cGMP signaling. This gene encodes a cAMP-specific phosphodiesterase, a member of the cyclic nucleotide phosphodiesterase family.[provided by RefSeq, Apr 2009]

Protein Families: Druggable Genome

Protein Pathways: Progesterone-mediated oocyte maturation, Purine metabolism

Product images:



Coomassie blue staining of purified PDE7B protein (Cat# TP310416). The protein was produced from HEK293T cells transfected with PDE7B cDNA clone (Cat# [RC210416]) using MegaTran 2.0 (Cat# [TT210002]).