

Product datasheet for **TP310404M**

Proteinase Activated Receptor 4 (F2RL3) (NM_003950) Human Recombinant Protein

Product data:

Product Type:	Recombinant Proteins
Description:	Recombinant protein of human coagulation factor II (thrombin) receptor-like 3 (F2RL3), 100 µg
Species:	Human
Expression Host:	HEK293T
Expression cDNA Clone or AA Sequence:	>RC210404 representing NM_003950 Red =Cloning site Green =Tags(s)

MWGRIIIWPLVLGFSLSGGTQTPSVYDESGSTGGGDDSTPSILPAPRGYPGQVCANDSDTLELPDSSRAL
LLGWVPTLVPALYGLVLVWGLPANGLALWVLATQAPRLPSTMLLMNLAADLLLALALPPRIAYHLRGQ
RWPFGEAACRLATAALYGHMYGSVLLAAVSLDRYLALVHPLRARALRGRRLALGLCMAAWLMAAALALP
LTLQRQTFRLARSDRVLCHDALPLDAQASHWQPAFTCLALLGCFLPLLAMLLCYGATLHTLAASGRRYGH
ALRLTAVVLASAVAFFVPSNLLLLHYSDPSPSAWGNLYGAYVPSLALSTLNSCVDPFIYYYYVSAEFRDK
VRAGLFQRSPGDTVASKASAEGGSRGMGTHSSLLQ

TRTRPLEQKLISEEDLAANDILDYKDDDDKV

Tag:	C-Myc/DDK
Predicted MW:	36.2 kDa
Concentration:	>0.05 µg/µL as determined by microplate BCA method
Purity:	> 80% as determined by SDS-PAGE and Coomassie blue staining
Buffer:	25 mM Tris-HCl, 100 mM glycine, pH 7.3, 10% glycerol
Preparation:	Recombinant protein was captured through anti-DDK affinity column followed by conventional chromatography steps.
Note:	For testing in cell culture applications, please filter before use. Note that you may experience some loss of protein during the filtration process.
Storage:	Store at -80°C.
Stability:	Stable for 12 months from the date of receipt of the product under proper storage and handling conditions. Avoid repeated freeze-thaw cycles.
RefSeq:	<u>NP_003941</u>
Locus ID:	9002



[View online »](#)

UniProt ID: [Q96RI0](#)

RefSeq Size: 2731

Cytogenetics: 19p13.11

RefSeq ORF: 1155

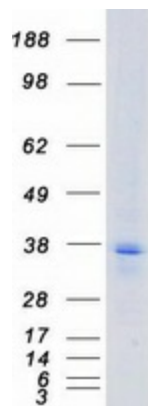
Synonyms: PAR4

Summary: This gene encodes a member of the protease-activated receptor subfamily, part of the G-protein coupled receptor 1 family of proteins. The encoded receptor is proteolytically processed to reveal an extracellular N-terminal tethered ligand that binds to and activates the receptor. This receptor plays a role in blood coagulation, inflammation and response to pain. Hypomethylation at this gene may be associated with lung cancer in human patients. [provided by RefSeq, Sep 2016]

Protein Families: Druggable Genome, GPCR, Transmembrane

Protein Pathways: Neuroactive ligand-receptor interaction

Product images:



Coomassie blue staining of purified F2RL3 protein (Cat# [TP310404]). The protein was produced from HEK293T cells transfected with F2RL3 cDNA clone (Cat# [RC210404]) using MegaTran 2.0 (Cat# [TT210002]).