

Product datasheet for **TP310386M**

gamma C Crystallin (CRYGC) (NM_020989) Human Recombinant Protein

Product data:

Product Type: Recombinant Proteins

Description: Recombinant protein of human crystallin, gamma C (CRYGC), 100 µg

Species: Human

Expression Host: HEK293T

**Expression cDNA Clone
or AA Sequence:** >RC210386 protein sequence
Red=Cloning site **Green**=Tags(s)

MGKITFYEDRAFQGRSYETTTDCPNLQPYFSRCNSIRVESGCWMLYERPNIYQGQQYLLRRGEYDPDYQQWM
GLSDSIRSCCLIPQTVSHRLRLYEREDHKGLMMELSEDCPSIQDRFHLSEIRSLHVLEGCWVLYELPNYR
GRQYLLRPQEYRRCQDWGAMDAKAGSLRRVVDLY

TRTRPLEQKLISEEDLAANDILDYKDDDDKV

Tag: C-Myc/DDK

Predicted MW: 20.7 kDa

Concentration: >0.05 µg/µL as determined by microplate BCA method

Purity: > 80% as determined by SDS-PAGE and Coomassie blue staining

Buffer: 25 mM Tris-HCl, 100 mM glycine, pH 7.3, 10% glycerol

Preparation: Recombinant protein was captured through anti-DDK affinity column followed by conventional chromatography steps.

Note: For testing in cell culture applications, please filter before use. Note that you may experience some loss of protein during the filtration process.

Storage: Store at -80°C.

Stability: Stable for 12 months from the date of receipt of the product under proper storage and handling conditions. Avoid repeated freeze-thaw cycles.

RefSeq: [NP_066269](#)

Locus ID: 1420

UniProt ID: [P07315](#), [A0A0X8GLL6](#)

RefSeq Size: 645



[View online »](#)

Cytogenetics: 2q33.3

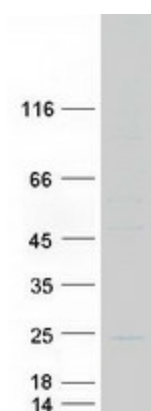
RefSeq ORF: 522

Synonyms: CCL; CRYG3; CTRCT2

Summary: This gene encodes a member of the beta/gamma-crystallin family of proteins. Crystallins constitute the major proteins of vertebrate eye lens and maintain the transparency and refractive index of the lens. This gene and several family members are present in a gene cluster on chromosome 2. Mutations in this gene have been shown to cause multiple types of cataract, including Coppock-like cataract and zonular pulverulent cataract, among others. [provided by RefSeq, Jan 2015]

Protein Families: Druggable Genome

Product images:



Coomassie blue staining of purified CRYGC protein (Cat# [TP310386]). The protein was produced from HEK293T cells transfected with CRYGC cDNA clone (Cat# [RC210386]) using MegaTran 2.0 (Cat# [TT210002]).