

## Product datasheet for **TP310385L**

### Melatonin Receptor 1A (MTNR1A) (NM\_005958) Human Recombinant Protein

#### Product data:

**Product Type:** Recombinant Proteins

**Description:** Recombinant protein of human melatonin receptor 1A (MTNR1A), 1 mg

**Species:** Human

**Expression Host:** HEK293T

**Expression cDNA Clone  
or AA Sequence:** >RC210385 protein sequence  
**Red**=Cloning site **Green**=Tags(s)

MQGNGSALPNASQPVLRGD GARPSWLASALACVLIFTIVVDILGNLLVILSVYRNKCLR NAGNIFVWSLA  
VADLVVAIYPYPLV LMSIFNNGWN LGYLHCQVSGFLMGLSVIGSIFNITGIAINRYCYICHSLKYDKLYS  
SKNSLCYVLLIWLLTAAVLPNLRAGTLQYDPRIYSCTFAQSVSSAYTIAVVVFHFLVPMIIVFCYLR I  
WILVLQVRQVRVKPDRKPKLPQDFRN FVTMFVVFVLF AICWAPLNF IGLAVASDPASMVPR IPEWLFVAS  
YYMAYFNSCLNAIYGLLNQNF RKEYRRIIVSLCTARVFFVDSSNDVADR VKWKPSPLMTN NNVVKVDSV

**TRTRPLEQKLISEEDLAANDILDYKDDDDKV**

**Tag:** C-Myc/DDK

**Predicted MW:** 39.2 kDa

**Concentration:** >0.05 µg/µL as determined by microplate BCA method

**Purity:** > 80% as determined by SDS-PAGE and Coomassie blue staining

**Buffer:** 25 mM Tris-HCl, 100 mM glycine, pH 7.3, 10% glycerol

**Preparation:** Recombinant protein was captured through anti-DDK affinity column followed by conventional chromatography steps.

**Note:** For testing in cell culture applications, please filter before use. Note that you may experience some loss of protein during the filtration process.

**Storage:** Store at -80°C.

**Stability:** Stable for 12 months from the date of receipt of the product under proper storage and handling conditions. Avoid repeated freeze-thaw cycles.

**RefSeq:** [NP\\_005949](#)

**Locus ID:** 4543



[View online »](#)

UniProt ID: [P48039](#)

RefSeq Size: 1105

Cytogenetics: 4q35.2

RefSeq ORF: 1050

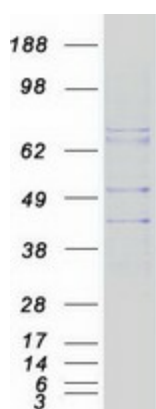
Synonyms: MEL-1A-R; MT1

**Summary:** This gene encodes one of two high affinity forms of a receptor for melatonin, the primary hormone secreted by the pineal gland. This receptor is a G-protein coupled, 7-transmembrane receptor that is responsible for melatonin effects on mammalian circadian rhythm and reproductive alterations affected by day length. The receptor is an integral membrane protein that is readily detectable and localized to two specific regions of the brain. The hypothalamic suprachiasmatic nucleus appears to be involved in circadian rhythm while the hypophysial pars tuberalis may be responsible for the reproductive effects of melatonin. [provided by RefSeq, Jul 2008]

**Protein Families:** Druggable Genome, GPCR, Transmembrane

**Protein Pathways:** Neuroactive ligand-receptor interaction

### Product images:



Coomassie blue staining of purified MTNR1A protein (Cat# [TP310385]). The protein was produced from HEK293T cells transfected with MTNR1A cDNA clone (Cat# [RC210385]) using MegaTran 2.0 (Cat# [TT210002]).