

## Product datasheet for **TP310384M**

### Opticin (OPTC) (NM\_014359) Human Recombinant Protein

#### Product data:

**Product Type:** Recombinant Proteins

**Description:** Recombinant protein of human opticin (OPTC), 100 µg

**Species:** Human

**Expression Host:** HEK293T

**Expression cDNA Clone or AA Sequence:** >RC210384 protein sequence  
**Red**=Cloning site **Green**=Tags(s)

MRLLAFLSLLALVLQETGTASLPRKERKRREEQMPREGDSFEVLPLRNDVLPDNYGEVIDLSNYEELTD  
YGDQLPEVKVTS LAPATSISPAKSTTAPGTPSSNPTMTRPTTAGLLSSQPNHGLPTCLVCVCLGSSVYC  
DDIDLEDIPPLPRRTAYLYARFNRIIRAEDFKGLTKLKRIDLSNNLISSIDNDAFRLLHALQDLILPE  
NQLEALPVLPSGIEFLDVRNLQSSGIQPAAFRAMEKQLFLYLSDNLLDSIPGPLPLSLRSVHLQNNLI  
ETMQRDVFCDPEEHKHTRRQLEDIRLDGNPINLSLFPSAYFCLPRLPIGRFT

**TRTRPLEQKLISEEDLAANDILDYKDDDDKV**

**Tag:** C-Myc/DDK

**Predicted MW:** 35.1 kDa

**Concentration:** >0.05 µg/µL as determined by microplate BCA method

**Purity:** > 80% as determined by SDS-PAGE and Coomassie blue staining

**Buffer:** 25 mM Tris-HCl, 100 mM glycine, pH 7.3, 10% glycerol

**Preparation:** Recombinant protein was captured through anti-DDK affinity column followed by conventional chromatography steps.

**Note:** For testing in cell culture applications, please filter before use. Note that you may experience some loss of protein during the filtration process.

**Storage:** Store at -80°C.

**Stability:** Stable for 12 months from the date of receipt of the product under proper storage and handling conditions. Avoid repeated freeze-thaw cycles.

**RefSeq:** [NP\\_055174](#)

**Locus ID:** 26254



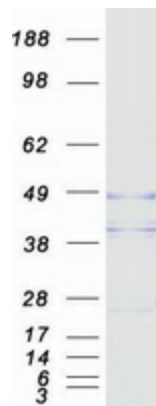
[View online »](#)

UniProt ID: [Q9UBM4](#)  
RefSeq Size: 1444  
Cytogenetics: 1q32.1  
RefSeq ORF: 996  
Synonyms: OPT

**Summary:** Opticin belongs to class III of the small leucine-rich repeat protein (SLRP) family. Members of this family are typically associated with the extracellular matrix. Opticin is present in significant quantities in the vitreous of the eye and also localizes to the cornea, iris, ciliary body, optic nerve, choroid, retina, and fetal liver. Opticin may noncovalently bind collagen fibrils and regulate fibril morphology, spacing, and organization. The opticin gene is mapped to a region of chromosome 1 that is associated with the inherited eye diseases age-related macular degeneration (AMD) and posterior column ataxia with retinosa pigmentosa (AXPC1). [provided by RefSeq, Jul 2008]

**Protein Families:** Secreted Protein

### Product images:



Coomassie blue staining of purified OPTC protein (Cat# [TP310384]). The protein was produced from HEK293T cells transfected with OPTC cDNA clone (Cat# [RC210384]) using MegaTran 2.0 (Cat# [TT210002]).