

Product datasheet for **TP310384**

Opticin (OPTC) (NM_014359) Human Recombinant Protein

Product data:

Product Type: Recombinant Proteins

Description: Recombinant protein of human opticin (OPTC), 20 µg

Species: Human

Expression Host: HEK293T

Expression cDNA Clone or AA Sequence: >RC210384 protein sequence
Red=Cloning site **Green**=Tags(s)

MRLLAFLSLLALVLQETGTASLPRKERKRREEQMPREGDSFEVLPLRNDVLPDNYGEVIDLSNYEELTD
YGDQLPEVKVTS LAPATSISPAKSTTAPGTPSSNPTMTRPTTAGLLSSQPNHGLPTCLVCVCLGSSVYC
DDIDLEDIPPLPRRTAYLYARFNRIIRAEDFKGLTKLKRIDLNNLISSIDNDAFRLLHALQDLILPE
NQLEALPVLPSGIEFLDVRNLQSSGIQPAAFRAMEKLQFLYLSDNLLDSIPGPLPLSLRSVHLQNNLI
ETMQRDVFCDPEEHKHTRRQLEDIRLDGNPINLSLFPSAYFCLPRLPIGRFT

TRTRPLEQKLISEEDLAANDILDYKDDDDKV

Tag: C-Myc/DDK

Predicted MW: 35.1 kDa

Concentration: >0.05 µg/µL as determined by microplate BCA method

Purity: > 80% as determined by SDS-PAGE and Coomassie blue staining

Buffer: 25 mM Tris-HCl, 100 mM glycine, pH 7.3, 10% glycerol

Preparation: Recombinant protein was captured through anti-DDK affinity column followed by conventional chromatography steps.

Note: For testing in cell culture applications, please filter before use. Note that you may experience some loss of protein during the filtration process.

Storage: Store at -80°C.

Stability: Stable for 12 months from the date of receipt of the product under proper storage and handling conditions. Avoid repeated freeze-thaw cycles.

RefSeq: [NP_055174](#)

Locus ID: 26254



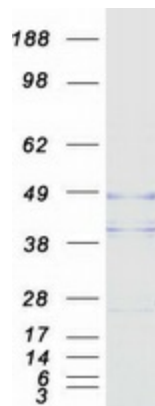
[View online »](#)

UniProt ID: [Q9UBM4](#)
RefSeq Size: 1444
Cytogenetics: 1q32.1
RefSeq ORF: 996
Synonyms: OPT

Summary: Opticin belongs to class III of the small leucine-rich repeat protein (SLRP) family. Members of this family are typically associated with the extracellular matrix. Opticin is present in significant quantities in the vitreous of the eye and also localizes to the cornea, iris, ciliary body, optic nerve, choroid, retina, and fetal liver. Opticin may noncovalently bind collagen fibrils and regulate fibril morphology, spacing, and organization. The opticin gene is mapped to a region of chromosome 1 that is associated with the inherited eye diseases age-related macular degeneration (AMD) and posterior column ataxia with retinosa pigmentosa (AXPC1). [provided by RefSeq, Jul 2008]

Protein Families: Secreted Protein

Product images:



Coomassie blue staining of purified OPTC protein (Cat# TP310384). The protein was produced from HEK293T cells transfected with OPTC cDNA clone (Cat# [RC210384]) using MegaTran 2.0 (Cat# [TT210002]).