

Product datasheet for TP310363

C1orf218 (NM_019049) Human Recombinant Protein

Product data:

| | |
|---------------------------------------|--|
| Product Type: | Recombinant Proteins |
| Description: | Recombinant protein of human chromosome 1 open reading frame 218 (C1orf218), 20 µg |
| Species: | Human |
| Expression Host: | HEK293T |
| Expression cDNA Clone or AA Sequence: | >RC210363 protein sequence Red =Cloning site Green =Tags(s) |

MTKATPAVRTAYKFAKNHAKLGLKEVKSKLKHKENEEDYGTCSSSVQYTPVYKLHNEKGGNSEKRKLAQA
RLKRPLKSLDGALYDDEDDDDIERASKLSSDGEASAYLYESDDSVETRVKTPYSGEMDLLGEILDTL
THSSDQGLAAAKSLDFFRSMDDIDYKPTNKSNAPENNLAFLCGGSGDQAEWNLGQDDALHGKHLPPS
PRKRSSSGLTDSLFIKEENS NKHLGADNVSDPTSLDFQLTSPEVSQTDKGKTEKRETLISDILLI
PGLGRHSSTFVPWEKEGKEAKETSEDIGLLHEVSLCHMTSDFQQLNISDKNTNGNQT

TRTRPLEQKLISEEDLAANDILDYKDDDDKV

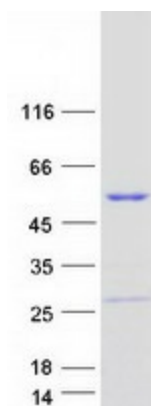
| | |
|----------------|--|
| Tag: | C-Myc/DDK |
| Predicted MW: | 37.2 kDa |
| Concentration: | >0.05 µg/µL as determined by microplate BCA method |
| Purity: | > 80% as determined by SDS-PAGE and Coomassie blue staining |
| Buffer: | 25 mM Tris-HCl, 100 mM glycine, pH 7.3, 10% glycerol |
| Preparation: | Recombinant protein was captured through anti-DDK affinity column followed by conventional chromatography steps. |
| Note: | For testing in cell culture applications, please filter before use. Note that you may experience some loss of protein during the filtration process. |
| Storage: | Store at -80°C. |
| Stability: | Stable for 12 months from the date of receipt of the product under proper storage and handling conditions. Avoid repeated freeze-thaw cycles. |
| RefSeq: | NP_061922 |
| Locus ID: | 54530 |



[View online »](#)

RefSeq Size: 2035
Cytogenetics: 1q31.3
RefSeq ORF: 1017
Synonyms: FLJ20054, DKFZp547O0715

Product images:



Coomassie blue staining of purified C1orf218 protein (Cat# TP310363). The protein was produced from HEK293T cells transfected with C1orf218 cDNA clone (Cat# [RC210363]) using MegaTran 2.0 (Cat# [TT210002]).