

Product datasheet for **TP310357L**

PRPH2 (NM_000322) Human Recombinant Protein

Product data:

Product Type:	Recombinant Proteins
Description:	Recombinant protein of human peripherin 2 (retinal degeneration, slow) (PRPH2), 1 mg
Species:	Human
Expression Host:	HEK293T
Expression cDNA Clone or AA Sequence:	>RC210357 protein sequence Red =Cloning site Green =Tags(s)
	<p>MALLKVKFDQKKRVKLAQGLWLMNWFSVLAGIIIFSLGLFLKIGLRKRSDVMNNSSESHFVPNSLIGMGVL SCVFNSLAGKICYDALDPAKYARWKPWLKPYLAICVLFNIILFLVALCCFLLRGSLENTLGQGLKNGMKY YRDTDTPGRCFMKKTIDMLQIEFKCCGNNGFRDWFEIQWISNRYLDFSSKEVKDRIKSNVDGRYLVDGVP FSCCNPSSPRCIQYQITNNSAHYSYDHQTEELNLWVRGCRAALLSYSSLMNSMGVVTLLIWLFEVTIT IGLRYLQTSLDGVSNP EESESESEGWLLEKSVPETWKAFLESVKKLGKGNQVEAEGAGAGQAPEAG</p> <p>TRTRPLEQKLISEEDLAANDILDYKDDDDKV</p>
Tag:	C-Myc/DDK
Predicted MW:	39.1 kDa
Concentration:	>0.05 µg/µL as determined by microplate BCA method
Purity:	> 80% as determined by SDS-PAGE and Coomassie blue staining
Buffer:	25 mM Tris-HCl, 100 mM glycine, pH 7.3, 10% glycerol
Preparation:	Recombinant protein was captured through anti-DDK affinity column followed by conventional chromatography steps.
Note:	For testing in cell culture applications, please filter before use. Note that you may experience some loss of protein during the filtration process.
Storage:	Store at -80°C.
Stability:	Stable for 12 months from the date of receipt of the product under proper storage and handling conditions. Avoid repeated freeze-thaw cycles.
RefSeq:	<u>NP_000313</u>
Locus ID:	5961



[View online »](#)

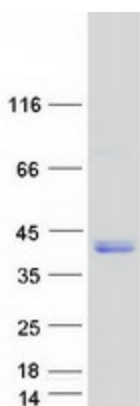
UniProt ID: [P23942](#)
RefSeq Size: 3027
Cytogenetics: 6p21.1
RefSeq ORF: 1038
Synonyms: AOFMD; AVMD; CACD2; DS; MDBS1; PRPH; rd2; RDS; RP7; TSPAN2

Summary: The protein encoded by this gene is a member of the transmembrane 4 superfamily, also known as the tetraspanin family. Most of these members are cell-surface proteins that are characterized by the presence of four hydrophobic domains. The proteins mediate signal transduction events that play a role in the regulation of cell development, activation, growth and motility. This encoded protein is a cell surface glycoprotein found in the outer segment of both rod and cone photoreceptor cells. It may function as an adhesion molecule involved in stabilization and compaction of outer segment disks or in the maintenance of the curvature of the rim. This protein is essential for disk morphogenesis. Defects in this gene are associated with both central and peripheral retinal degenerations. Some of the various phenotypically different disorders are autosomal dominant retinitis pigmentosa, progressive macular degeneration, macular dystrophy and retinitis pigmentosa digenic. [provided by RefSeq, Jul 2008]

Protein Families: Druggable Genome, Transmembrane

Protein Pathways: Amyotrophic lateral sclerosis (ALS)

Product images:



Coomassie blue staining of purified PRPH2 protein (Cat# [TP310357]). The protein was produced from HEK293T cells transfected with PRPH2 cDNA clone (Cat# [RC210357]) using MegaTran 2.0 (Cat# [TT210002]).