

Product datasheet for **TP310356M**

PON1 (NM_000446) Human Recombinant Protein

Product data:

Product Type: Recombinant Proteins

Description: Recombinant protein of human paraoxonase 1 (PON1), 100 µg

Species: Human

Expression Host: HEK293T

Expression cDNA Clone or AA Sequence: >RC210356 protein sequence
Red=Cloning site Green=Tags(s)

MAKLIALTLLGMGLALFRNHQSSYQTRLNALREVQPVELPNCNLVKGIETGSEDLEILPNGLAFISSGLK
YPGIKSFNPNSPGKILLMDLNEEDPTVLELGITGSKFDVSSFNPHGISTFTDEDNAMYLLVNHHPDAKST
VELFKFQEEKSLHLKTIKHLKLLPNLNDIVAVGPEHFYGTNDHYFLDPYLQSWEMYLGLAWSYVVYSP
SEVRVVAEGFDFANGINISPDGKYVYIAELLAHKIHVYEKXANWTLTPLKSLDFNTLVDNISVDPETGDL
WVGCHPNGMKIFFYDSENPPASEVLRIQNILTEPKVTQVYAENGTVLQGSTVASVYKGLKLLIGTVFHKA
LYCEL

TRTRPLEQKLISEEDLAANDILDYKDDDDKV

Tag: C-Myc/DDK

Predicted MW: 39.6 kDa

Concentration: >0.05 µg/µL as determined by microplate BCA method

Purity: > 80% as determined by SDS-PAGE and Coomassie blue staining

Buffer: 25 mM Tris-HCl, 100 mM glycine, pH 7.3, 10% glycerol

Preparation: Recombinant protein was captured through anti-DDK affinity column followed by conventional chromatography steps.

Note: For testing in cell culture applications, please filter before use. Note that you may experience some loss of protein during the filtration process.

Storage: Store at -80°C.

Stability: Stable for 12 months from the date of receipt of the product under proper storage and handling conditions. Avoid repeated freeze-thaw cycles.

RefSeq: [NP_000437](#)

Locus ID: 5444



[View online »](#)

UniProt ID: [P27169](#)

RefSeq Size: 1769

Cytogenetics: 7q21.3

RefSeq ORF: 1065

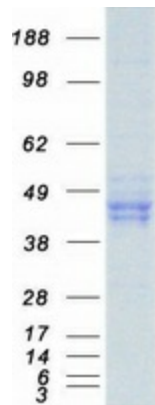
Synonyms: ESA; MVCD5; PON

Summary: This gene encodes a member of the paraoxonase family of enzymes and exhibits lactonase and ester hydrolase activity. Following synthesis in the kidney and liver, the enzyme is secreted into the circulation, where it binds to high density lipoprotein (HDL) particles and hydrolyzes thiolactones and xenobiotics, including paraoxon, a metabolite of the insecticide parathion. Polymorphisms in this gene may be associated with coronary artery disease and diabetic retinopathy. The gene is found in a cluster of three related paraoxonase genes on chromosome 7. [provided by RefSeq, Aug 2017]

Protein Families: Druggable Genome, Secreted Protein

Protein Pathways: Metabolic pathways

Product images:



Coomassie blue staining of purified PON1 protein (Cat# [TP310356]). The protein was produced from HEK293T cells transfected with PON1 cDNA clone (Cat# [RC210356]) using MegaTran 2.0 (Cat# [TT210002]).