

## Product datasheet for **TP310351M**

### CCDC157 (NM\_001017437) Human Recombinant Protein

#### Product data:

**Product Type:** Recombinant Proteins  
**Description:** Recombinant protein of human coiled-coil domain containing 157 (CCDC157), 100 µg  
**Species:** Human  
**Expression Host:** HEK293T  
**Expression cDNA Clone or AA Sequence:** >RC210351 protein sequence  
**Red**=Cloning site **Green**=Tags(s)

MVALLEHYDHVPGDPEFTQLSHAVLLELVIDRLLLLLQSCMSYLENLGSEQMMPPAQAAGPCMSVGLTVR  
RFWDSLLRLGTLHQQPLPQKGANQRETPTSKPTTKGEPARSPEYLTTKLIKPSPLVGLPQTCQEPESIP  
VRASLQFPATTFKNTRSVHSQTIETALVPCDACASVQGSLLQVGVKVISLQSQNLPSLLGQFQQLVQDS  
MGLRPLPAATVGRWAAEQRKDLTRLSKHVEALRAQLEEAEGQKDGLRKQAGKLEQALKQEQGARRRQAEE  
DEQCLSEWEHDKQQLLTETSDLKTKMATLERELKQRESTQAVEAKAQQQLQEEGERRAAAERQVQQLQEEQ  
VQQLEAQVQLLVGRLEGAGQQVCWASTELDKKARVDSMVRHQESLQAKQRALLKQLDQLDQEREELRGS  
LDEAEAQRARVEEQQSEREQGCQLRAQQELLQSLQREKQGLEQATDDLRLTILELERELEELKERERL  
LVAFPDHLRPTETQIHGGRSSSVESQITCPTDSGNVTDHMERQVQANDIRIRVLQEENGRLLQSMMLSKIRE  
VAQQGGLKLIPQDRLWSPSSKGTQGATPPVQAKSTSPGPLGRQHLPSSRTGRTLLGQPCTSPPRQPCTSP  
PRQPCTSPPRQPCTSPSRQPCSQPSKSLLEGVTHLDTCTQNPIKVLVRLRKRKLSPPGRGQASSAHQPQERP  
M

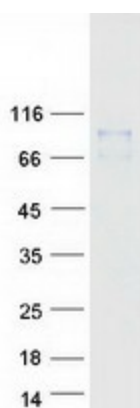
**TRTRPLEQKLISEEDLAANDILDYKDDDDKV**

**Tag:** C-Myc/DDK  
**Predicted MW:** 78.1 kDa  
**Concentration:** >0.05 µg/µL as determined by microplate BCA method  
**Purity:** > 80% as determined by SDS-PAGE and Coomassie blue staining  
**Buffer:** 25 mM Tris-HCl, 100 mM glycine, pH 7.3, 10% glycerol  
**Preparation:** Recombinant protein was captured through anti-DDK affinity column followed by conventional chromatography steps.  
**Note:** For testing in cell culture applications, please filter before use. Note that you may experience some loss of protein during the filtration process.  
**Storage:** Store at -80°C.



[View online »](#)

Stability:	Stable for 12 months from the date of receipt of the product under proper storage and handling conditions. Avoid repeated freeze-thaw cycles.
RefSeq:	<a href="#">NP_001017437</a>
Locus ID:	550631
UniProt ID:	<a href="#">Q569K6</a>
RefSeq Size:	3023
Cytogenetics:	22q12.2
RefSeq ORF:	2103

**Product images:**

Coomassie blue staining of purified CCDC157 protein (Cat# [TP310351]). The protein was produced from HEK293T cells transfected with CCDC157 cDNA clone (Cat# [RC210351]) using MegaTran 2.0 (Cat# [TT210002]).