

## Product datasheet for **TP310329L**

### ISLR (NM\_005545) Human Recombinant Protein

#### Product data:

Product Type:	Recombinant Proteins
Description:	Recombinant protein of human immunoglobulin superfamily containing leucine-rich repeat (ISLR), transcript variant 1, 1 mg
Species:	Human
Expression Host:	HEK293T
Expression cDNA Clone or AA Sequence:	>RC210329 protein sequence <b>Red</b> =Cloning site <b>Green</b> =Tags(s)

MQELHLLWWALLLGLAQACPEPCDCGEKYGFQIADCAYRDLESVPPGFANVTLSLSANRLPGLPEGAF  
REVPLLQSLWLAHNEIRTVAAGALASLSHLKSLDLSHNLISDFAWSDLHNLSALQLLKMDSNELTFIPRD  
AFRSLRALRSLQLNHNRLHTLAEGTFTPLTALSHLQINENPFDCCTCGIWLKTWALTAVSIPEQDNIAC  
TSPHVLKGTPLSRLPPLPCAPSQVLSYQPSQDGAELRPGFVLALHCDVDGQPAPQLHWHIQIPSGIVEI  
TSPNVGTDGRALPGTPVASSQPRFQAFANGSLLIPDFGKLEEGTYSCLATNELGSAESSVDVALATPGEG  
GEDTLGRRFHGKAVEGKGCYTVDNEVQPSGPEDNVVIYLSRAGNPEAAVAEGVPGQLPPGLLLLGQSL  
LFFFLTSF

**TRTRPLEQKLISEEDLAANDILDYKDDDDKV**

Tag:	C-Myc/DDK
Predicted MW:	45.8 kDa
Concentration:	>0.05 µg/µL as determined by microplate BCA method
Purity:	> 80% as determined by SDS-PAGE and Coomassie blue staining
Buffer:	25 mM Tris-HCl, 100 mM glycine, pH 7.3, 10% glycerol
Preparation:	Recombinant protein was captured through anti-DDK affinity column followed by conventional chromatography steps.
Note:	For testing in cell culture applications, please filter before use. Note that you may experience some loss of protein during the filtration process.
Storage:	Store at -80°C.
Stability:	Stable for 12 months from the date of receipt of the product under proper storage and handling conditions. Avoid repeated freeze-thaw cycles.



[View online >](#)

RefSeq: [NP\\_005536](#)

Locus ID: 3671

UniProt ID: [O14498](#), [A0A146E5L3](#)

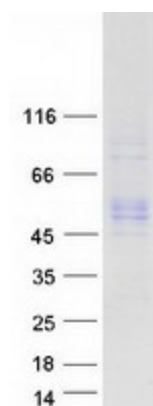
RefSeq Size: 2312

Cytogenetics: 15q24.1

RefSeq ORF: 1284

Synonyms: HsT17563; Meffin

### Product images:



Coomassie blue staining of purified ISLR protein (Cat# [TP310329]). The protein was produced from HEK293T cells transfected with ISLR cDNA clone (Cat# [RC210329]) using MegaTran 2.0 (Cat# [TT210002]).