

Product datasheet for **TP310327L**

GRK2 (NM_001619) Human Recombinant Protein

Product data:

Product Type:	Recombinant Proteins
Description:	Recombinant protein of human adrenergic, beta, receptor kinase 1 (ADRBK1), 1 mg
Species:	Human
Expression Host:	HEK293T
Expression cDNA Clone or AA Sequence:	>RC210327 representing NM_001619 Red =Cloning site Green =Tags(s)

MADLEAVLADVSYLMAMEKSKATPAARASKILLPEPSIRSVMQKYLEDRGEVTFEKIFSQKLGYLLFRD
FCLNHLEEARPLVEFYEEIKKYEKLETEEERVARSRIFDSYIMKELLACSHPPFSKSATEHVQGHGKQ
VPPDLFQPYIEEICQNLRGDVFQKFIESDKFTRFCQWKNVELNIHLMNDFSVHRIIGRGGFGEVYGCRK
ADTGKMYAMKCLDKKRIKMKQGETLALNERIMLSLVSTGDCPFIVCMSYAFHTPKLSFILDLMNGGDLH
YHLSQHGVFSEADMRFYAAEILGLEHMHNRVYRDLPANILLDEHGHVRISDLGLACDFSKKKPHAS
VGTHGYMAPEVLQKGVAYDSSADWFSLGCMLFKLLRGHSPFRQHKTCDKHEIDRMTLTMAVELPDSFSPE
LRSLLLEGLLQRDVNRRLGCLGRGAQEVKESPFRRSLDWQMVFLQKYPPLIPPRGEVNAADAFDIGSFDE
EDTKGIKLLDSDQELYRNFPLTISERWQQEVAETVFDTINAETDRLEARKKAKNKQLGHEEDYALGKDCI
MHGYMSKMGNPFLTQWQRRYFYLFPNRLEWRGEGEAPQSLLTMEEIQSVEETQIKERKCLLLKIRGGKQF
ILQCDSDPELVQWKELRDYREAQQLVQRVPMKMKPRSPVWELSKVPLVQRGSANGLSGP

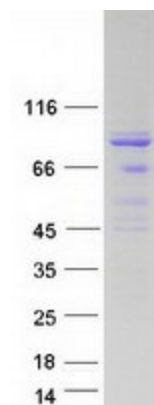
SGPTRRRLEQKLISEEDLAANDILDYKDDDDKV

Tag:	C-Myc/DDK
Predicted MW:	79.4 kDa
Concentration:	>0.05 µg/µL as determined by microplate BCA method
Purity:	> 80% as determined by SDS-PAGE and Coomassie blue staining
Buffer:	25 mM Tris-HCl, 100 mM glycine, pH 7.3, 10% glycerol
Preparation:	Recombinant protein was captured through anti-DDK affinity column followed by conventional chromatography steps.
Note:	For testing in cell culture applications, please filter before use. Note that you may experience some loss of protein during the filtration process.
Storage:	Store at -80°C.



[View online »](#)

Stability:	Stable for 12 months from the date of receipt of the product under proper storage and handling conditions. Avoid repeated freeze-thaw cycles.
RefSeq:	<u>NP_001610</u>
Locus ID:	156
UniProt ID:	<u>P25098, A0A0S2Z392</u>
RefSeq Size:	3603
Cytogenetics:	11q13.2
RefSeq ORF:	2076
Synonyms:	ADRBK1; BARK1; BETA-ARK1
Summary:	This gene encodes a member of the G protein-coupled receptor kinase family of proteins. The encoded protein phosphorylates the beta-adrenergic receptor as well as a wide range of other substrates including non-GPCR cell surface receptors, and cytoskeletal, mitochondrial, and transcription factor proteins. Data from rodent models supports a role for this gene in embryonic development, heart function and metabolism. Elevated expression of this gene has been observed in human patients with heart failure and Alzheimer's disease. [provided by RefSeq, Sep 2017]
Protein Families:	Druggable Genome, Protein Kinase
Protein Pathways:	Chemokine signaling pathway, Endocytosis

Product images:

Coomassie blue staining of purified GRK2 protein (Cat# [TP310327]). The protein was produced from HEK293T cells transfected with GRK2 cDNA clone (Cat# [RC210327]) using MegaTran 2.0 (Cat# [TT210002]).