

Product datasheet for **TP310322L**

Reticulon 1 (RTN1) (NM_021136) Human Recombinant Protein

Product data:

Product Type:	Recombinant Proteins
Description:	Recombinant protein of human reticulon 1 (RTN1), transcript variant 1, 1 mg
Species:	Human
Expression Host:	HEK293T
Expression cDNA	>RC210322 representing NM_021136
Clone or AA Sequence:	Red=Cloning site Green=Tags(s)

MAAPGDPQDELLPLAGPGSQWLRHRGEGENEAVTPKGATPAPQAGEPSPGLGARAREAAASREAGSGPARQ
SPVAMETASTGVAGVSSAMDHTFSTTSKDGEGSCYTSLSIDICYPPQEDSTYFTGILQKENGHVTISESP
EELGTPGPSLPDVPGLIESRGLFSSDSGIEMTPAESTEVNKLADPLDQMKAEAYKYIDITRPEEVKHQEQ
HHPELEDKDLDFKNKDTDISIKPEGVREPDKPAPVEGKIIKDHLLLEESTFAPYIDDLSEEQRRAQITTP
VKITLTEIEPSVETTTQEKTPKQDICKLPSPTVPTVTVSEPEDDSPGSITPPSSGTEPSAAESQGKGS
ISEDELITAIKEAKGLSYETAENPRPVGQLADRPEVKARSGPPTIPSPLDHEASSAESGDSEIELVSEDP
MAAEDALPSGYVSFGHVGGPPSPASPSIQYSILREEREAEELDSLIIESCDASSASEESPKREQDSPPM
KPSALDAIREETGVRAEERAPSRRLAEPGSFLDYPSTEPQGPPELPPGDGALEPETMPLPRKPEEDSSS
NQSPAATKGPGLPGAPPPLLFLNKQKAIIDLLYWRDIKQTGIVFGSLLLLFSLTQFSVSVVAYLALA
ALSATISFRIYKSVLQAVQKTDEGHPFKAYLELEITLSQEQIQKYTDCLQFVNSTLKLRLFLVQDLV
DSLKFAVLMWLLTYVGALFNGLTLLLMAVSMFTLPVVYVKHQAQIDQYLGLVRTHINAVVAKIQAKIPG
AKRHAE

TRTRPLEQKLISEEDLAANDILDYKDDDDKV

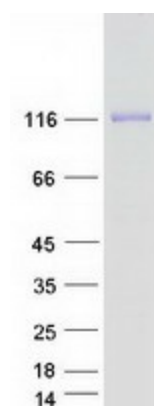
Tag:	C-Myc/DDK
Predicted MW:	83.4 kDa
Concentration:	>0.05 µg/µL as determined by microplate BCA method
Purity:	> 80% as determined by SDS-PAGE and Coomassie blue staining
Buffer:	25 mM Tris-HCl, 100 mM glycine, pH 7.3, 10% glycerol
Preparation:	Recombinant protein was captured through anti-DDK affinity column followed by conventional chromatography steps.
Note:	For testing in cell culture applications, please filter before use. Note that you may experience some loss of protein during the filtration process.



[View online »](#)

Storage:	Store at -80°C.
Stability:	Stable for 12 months from the date of receipt of the product under proper storage and handling conditions. Avoid repeated freeze-thaw cycles.
RefSeq:	NP_066959
Locus ID:	6252
UniProt ID:	Q16799
RefSeq Size:	3327
Cytogenetics:	14q23.1
RefSeq ORF:	2328
Synonyms:	NSP
Summary:	This gene belongs to the family of reticulon encoding genes. Reticulons are associated with the endoplasmic reticulum, and are involved in neuroendocrine secretion or in membrane trafficking in neuroendocrine cells. This gene is considered to be a specific marker for neurological diseases and cancer, and is a potential molecular target for therapy. Alternative splicing results in multiple transcript variants. [provided by RefSeq, Jul 2011]
Protein Families:	Transmembrane

Product images:



Coomassie blue staining of purified RTN1 protein (Cat# [TP310322]). The protein was produced from HEK293T cells transfected with RTN1 cDNA clone (Cat# [RC210322]) using MegaTran 2.0 (Cat# [TT210002]).