

Product datasheet for TP310312M

CNDP1 (NM_032649) Human Recombinant Protein

Product data:

Product Type: Recombinant Proteins

Description: Recombinant protein of human carnosine dipeptidase 1 (metallopeptidase M20 family) (CNDP1), 100 µg

Species: Human

Expression Host: HEK293T

Expression cDNA Clone or AA Sequence: >RC210312 protein sequence
Red=Cloning site **Green**=Tags(s)

MDPKLGRMAASLLAVLLLLLLERGMFSSPSPPPALLEKVFQYIDLHQDEFVQTLKEWVAIESDSVQPVPR
FRQELFRMMAVAADTLQRLGARVASVDMGPPQLPDGQSLPIPPVILAEFGSDPTKGTVCFYGHLDVQPAD
RGDGLWLTDPYVLTEVDGKLYGRGATDNKGPVLAWINAVSAFRALEQDLPVNIKFIEGMEEAGSVALEEL
VEKEKDRFFSGVDYIVISDNLWISQRKPAITYGTRGNSYFMVEVKCRDQDFHSGTFFGGILNEPMADLVAL
LGSLVDSSGHILVPGIYDEVVPLTEEEINTYKAIHLDLEEYRNSRVEKFLFDTKEEILMHLWRYP SLSI
HGIEGAFDEPGTKTVIPGRVIGKFSIRLVPHMNVSAVEKQVTRHLEDVFSKRNSNKMVVSMTLGLHPWI
ANIDDTQYLAACKRAIRTVFGTEPDMIRDGSTIPIAKMFQEIHKSVVLIPLGAVDDGEHSQNEKINRWNY
IEGTKLFAAFFLEMAQLH

TRTRPLEQKLISEEDLAANDILDYKDDDDKV

Tag: C-Myc/DDK

Predicted MW: 56.5 kDa

Concentration: >0.05 µg/µL as determined by microplate BCA method

Purity: > 80% as determined by SDS-PAGE and Coomassie blue staining

Buffer: 25 mM Tris-HCl, 100 mM glycine, pH 7.3, 10% glycerol

Preparation: Recombinant protein was captured through anti-DDK affinity column followed by conventional chromatography steps.

Note: For testing in cell culture applications, please filter before use. Note that you may experience some loss of protein during the filtration process.

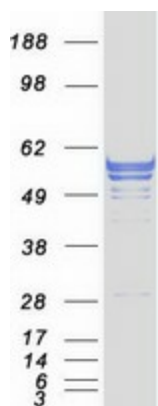
Storage: Store at -80°C.



[View online »](#)

Stability:	Stable for 12 months from the date of receipt of the product under proper storage and handling conditions. Avoid repeated freeze-thaw cycles.
RefSeq:	NP_116038
Locus ID:	84735
UniProt ID:	Q96KN2
RefSeq Size:	2211
Cytogenetics:	18q22.3
RefSeq ORF:	1524
Synonyms:	CN1; CPGL2; HsT2308
Summary:	This gene encodes a member of the M20 metalloprotease family. The encoded protein is specifically expressed in the brain, is a homodimeric dipeptidase which was identified as human carnosinase. This gene contains trinucleotide (CTG) repeat length polymorphism in the coding region. [provided by RefSeq, Jul 2008]
Protein Families:	Protease, Secreted Protein
Protein Pathways:	beta-Alanine metabolism, Histidine metabolism, Metabolic pathways

Product images:



Coomassie blue staining of purified CNDP1 protein (Cat# [TP310312]). The protein was produced from HEK293T cells transfected with CNDP1 cDNA clone (Cat# [RC210312]) using MegaTran 2.0 (Cat# [TT210002]).