

Product datasheet for TP310312L

CNDP1 (NM_032649) Human Recombinant Protein

Product data:

Product Type:	Recombinant Proteins
Description:	Recombinant protein of human carnosine dipeptidase 1 (metallopeptidase M20 family) (CNDP1), 1 mg
Species:	Human
Expression Host:	HEK293T
Expression cDNA Clone or AA Sequence:	>RC210312 protein sequence Red=Cloning site Green=Tags(s)

MDPKLGRMAASLLAVLLLLLLERGMFSSPSPPPALLEKVFQYIDLHQDEFVQTLKEWVAIESDSVQPVPR
FRQELFRMMAVAADTLQRLGARVASVDMGPPQLPDGQSLPIPPVILAEFGSDPTKGTVCFYGHLDVQPAD
RGDGLWLTDPYVLTEVDGKLYGRGATDNKGPVLAWINAVSAFRALEQDLPVNIKFIEGMEEAGSVALEEL
VEKEKDRFFSGVDYIVISDNLWISQRKPAITYGTRGNSYFMVEVKCRDQDFHSGTFFGGILNEPMADLVAL
LGSLVDSSGHILVPGIYDEVVPLTEEEINTYKAIHLDL EEYRNSRVEKFLFDTKEEILMHLWRYP SLSI
HGIEGAFDEPGTKTVIPGRVIGKFSIRLVPHMNVS AVEKQVTRHLEDVFSKRNSSNKMVVSMTLGLHPWI
ANIDDTQYLA AKRAIRTVFGTEPDMIRDGSTIPIAKMFQEI VHKSVVLIPLGAVDDGEHSQNEKINRWNY
IEGTKLFAAFFLEMAQLH

TRTRPLEQKLISEEDLAANDILDYKDDDDKV

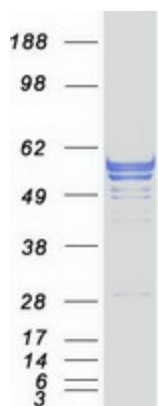
Tag:	C-Myc/DDK
Predicted MW:	56.5 kDa
Concentration:	>0.05 µg/µL as determined by microplate BCA method
Purity:	> 80% as determined by SDS-PAGE and Coomassie blue staining
Buffer:	25 mM Tris-HCl, 100 mM glycine, pH 7.3, 10% glycerol
Preparation:	Recombinant protein was captured through anti-DDK affinity column followed by conventional chromatography steps.
Note:	For testing in cell culture applications, please filter before use. Note that you may experience some loss of protein during the filtration process.
Storage:	Store at -80°C.



[View online »](#)

Stability:	Stable for 12 months from the date of receipt of the product under proper storage and handling conditions. Avoid repeated freeze-thaw cycles.
RefSeq:	NP_116038
Locus ID:	84735
UniProt ID:	Q96KN2
RefSeq Size:	2211
Cytogenetics:	18q22.3
RefSeq ORF:	1524
Synonyms:	CN1; CPGL2; HsT2308
Summary:	This gene encodes a member of the M20 metalloprotease family. The encoded protein is specifically expressed in the brain, is a homodimeric dipeptidase which was identified as human carnosinase. This gene contains trinucleotide (CTG) repeat length polymorphism in the coding region. [provided by RefSeq, Jul 2008]
Protein Families:	Protease, Secreted Protein
Protein Pathways:	beta-Alanine metabolism, Histidine metabolism, Metabolic pathways

Product images:



Coomassie blue staining of purified CNDP1 protein (Cat# [TP310312]). The protein was produced from HEK293T cells transfected with CNDP1 cDNA clone (Cat# [RC210312]) using MegaTran 2.0 (Cat# [TT210002]).