

## Product datasheet for TP310312

### CNDP1 (NM\_032649) Human Recombinant Protein

#### Product data:

**Product Type:** Recombinant Proteins

**Description:** Recombinant protein of human carnosine dipeptidase 1 (metallopeptidase M20 family) (CNDP1), 20 µg

**Species:** Human

**Expression Host:** HEK293T

**Expression cDNA Clone or AA Sequence:** >RC210312 protein sequence  
**Red**=Cloning site **Green**=Tags(s)

MDPKLGRMAASLLAVLLLLLLERGMFSSPSPPPALLEKVFQYIDLHQDEFVQTLKEWVAIESDSVQPVPR  
FRQELFRMMAVAADTLQRLGARVASVDMGPPQLPDGQSLPIPPVILAEFGSDPTKGTVCFYGHLDVQPAD  
RGDGLWLTDPYVLTEVDGKLYGRGATDNKGPVLAWINAVSAFRALEQDLPVNIKFIEGMEEAGSVALEEL  
VEKEKDRFFSGVDYIVISDNLWISQRKPAITYGTRGNSYFMVEVKCRDQDFHSGTFFGGILNEPMADLVAL  
LGSLVDSSGHILVPGIYDEVVPLTEEEINTYKAIHLDL EEYRNSRVEKFLFDTKEEILMHLWRYP SLSI  
HGIEGAFDEPGTKTVIPGRVIGKFSIRLVPHMNVSAVEKQVTRHLEDVFSKRNSNKMVVSMTLGLHPWI  
ANIDDTQYLAACKRAIRTVFGTEPDMIRDGSTIPIAKMFQEIVHKS VVLIPLGAVDDGEHSQNEKINRWNY  
IEGTKLFAAFFLEMAQLH

**TRTRPLEQKLISEEDLAANDILDYKDDDDKV**

**Tag:** C-Myc/DDK

**Predicted MW:** 56.5 kDa

**Concentration:** >0.05 µg/µL as determined by microplate BCA method

**Purity:** > 80% as determined by SDS-PAGE and Coomassie blue staining

**Buffer:** 25 mM Tris-HCl, 100 mM glycine, pH 7.3, 10% glycerol

**Preparation:** Recombinant protein was captured through anti-DDK affinity column followed by conventional chromatography steps.

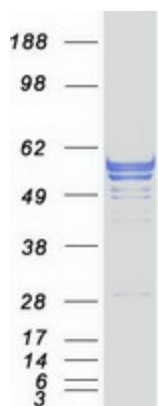
**Note:** For testing in cell culture applications, please filter before use. Note that you may experience some loss of protein during the filtration process.

**Storage:** Store at -80°C.



[View online »](#)

<b>Stability:</b>	Stable for 12 months from the date of receipt of the product under proper storage and handling conditions. Avoid repeated freeze-thaw cycles.
<b>RefSeq:</b>	<a href="#">NP_116038</a>
<b>Locus ID:</b>	84735
<b>UniProt ID:</b>	<a href="#">Q96KN2</a>
<b>RefSeq Size:</b>	2211
<b>Cytogenetics:</b>	18q22.3
<b>RefSeq ORF:</b>	1524
<b>Synonyms:</b>	CN1; CPGL2; HsT2308
<b>Summary:</b>	This gene encodes a member of the M20 metalloprotease family. The encoded protein is specifically expressed in the brain, is a homodimeric dipeptidase which was identified as human carnosinase. This gene contains trinucleotide (CTG) repeat length polymorphism in the coding region. [provided by RefSeq, Jul 2008]
<b>Protein Families:</b>	Protease, Secreted Protein
<b>Protein Pathways:</b>	beta-Alanine metabolism, Histidine metabolism, Metabolic pathways

**Product images:**

Coomassie blue staining of purified CNDP1 protein (Cat# TP310312). The protein was produced from HEK293T cells transfected with CNDP1 cDNA clone (Cat# [RC210312]) using MegaTran 2.0 (Cat# [TT210002]).