

Product datasheet for **TP310279L**

MARK2 (NM_004954) Human Recombinant Protein

Product data:

Product Type:	Recombinant Proteins
Description:	Recombinant protein of human MAP/microtubule affinity-regulating kinase 2 (MARK2), transcript variant 2, 1 mg
Species:	Human
Expression Host:	HEK293T
Expression cDNA	>RC210279 protein sequence
Clone or AA Sequence:	Red=Cloning site Green=Tags(s)

MSSARTPLPTLNERDTEQPTLGHLDSKPSSKSNMIRGRNSATSADEQPHIGNYRLLKTIGKGNFAKVKLA
RHILTGKEVAVKIIDKTQLNSSLQKLFREVRIMKVLNHPNIVKLFVIETEKTLVLMVEYASGGEVFDY
LVAHGRMKEKEARAKFRQIVSAVQYCHQKFIVHRDLKAENLLDADMNIKIADFGFSNEFTFGNKLDTFC
GSPPYAAPELFGKKYDGPEVDVWSLGVILYTLVSGSLPFDGQNLKELRERVLRGKYRIPFYMSTDCENL
LKKFLILNPSKRGTLEQIMKDRWMNVGHEDDELKPYVEPLPDYKDPRTLMVSMGYTREEIQDSLVGQR
YNEVMATYLLLGYSSELEGDTITLKRPSADLTNSSAPSPSHKVQRSVSANPKQRRFSDQAGPAIPTSN
SYSKKTQSNNAENKRPEEDRESGRKASSTAKVPASPLPLGLERKTTPTPSTNSVLSTSTNRSRNSPLLER
ASLGQASIQNGKDSTAPQRPVSPSAHNISSSGGAPDRTNFPRGVSSRSTFHAGQLRQVRDQQNLPYGV
TPASPSGHSQRRGASGSIFSFTSKFVRRNLNEPESKDRVETLRPHVVGSGGNDKEKEEFREAKPRSLR
FTWSMKTSSMEPNEMMREIRKVLNANSCQSELHEKYMLLCMHGTPGHEDFVQWEMEVCCLPRLSLNGVR
FKRISGTSMAFKNIASKIANELKL

TRTRPLEQKLISEEDLAANDILDYKDDDDKV

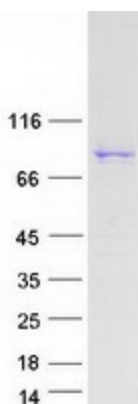
Tag:	C-Myc/DDK
Predicted MW:	81 kDa
Concentration:	>0.05 µg/µL as determined by microplate BCA method
Purity:	> 80% as determined by SDS-PAGE and Coomassie blue staining
Buffer:	25 mM Tris-HCl, 100 mM glycine, pH 7.3, 10% glycerol
Preparation:	Recombinant protein was captured through anti-DDK affinity column followed by conventional chromatography steps.
Note:	For testing in cell culture applications, please filter before use. Note that you may experience some loss of protein during the filtration process.



[View online >](#)

Storage:	Store at -80°C.
Stability:	Stable for 12 months from the date of receipt of the product under proper storage and handling conditions. Avoid repeated freeze-thaw cycles.
RefSeq:	NP_004945
Locus ID:	2011
UniProt ID:	Q7KZ17
RefSeq Size:	4556
Cytogenetics:	11q13.1
RefSeq ORF:	2172
Synonyms:	EMK-1; EMK1; PAR-1; Par-1b; Par1b
Summary:	This gene encodes a member of the Par-1 family of serine/threonine protein kinases. The protein is an important regulator of cell polarity in epithelial and neuronal cells, and also controls the stability of microtubules through phosphorylation and inactivation of several microtubule-associated proteins. The protein localizes to cell membranes. Multiple transcript variants encoding different isoforms have been found for this gene. [provided by RefSeq, Jul 2009]
Protein Families:	Druggable Genome, Protein Kinase

Product images:



Coomassie blue staining of purified MARK2 protein (Cat# [TP310279]). The protein was produced from HEK293T cells transfected with MARK2 cDNA clone (Cat# [RC210279]) using MegaTran 2.0 (Cat# [TT210002]).