

## Product datasheet for **TP310268M**

### **KLC4 (NM\_201521) Human Recombinant Protein**

#### **Product data:**

<b>Product Type:</b>	Recombinant Proteins
<b>Description:</b>	Recombinant protein of human kinesin light chain 4 (KLC4), transcript variant 1, 100 µg
<b>Species:</b>	Human
<b>Expression Host:</b>	HEK293T
<b>Expression cDNA Clone or AA Sequence:</b>	>RC210268 protein sequence <b>Red</b> =Cloning site <b>Green</b> =Tags(s)

MSGLVLGQRDEPAGHRLSQEEILGSTRLVSQGLEALRSEHQAVLQSLSQTIECLQGGHEEGLVHEKARQ  
LRRSMENIELGLSEAQVMLALASHLSTVESEKQKLRAQVRRRCQENQWLRDELAGTQQLRSEQAVAQL  
EEEKHLLEFLGQLRQYDEDGHTSEEKEGDATKDSLDDLFPNEEEEDPSNGLSRGQGATAAQGGYEIPAR  
LRTLHNLVIQYAAQGRYEAVPLCKQALEDLERTSGRGHPDVATMLNILALVYRDQNKYKEAAHLLNDAL  
SIRESTLGPDPHPAVAATLNNLAVLYGKRGKYKEAEPLCQRALEIREKVLGTNHPDVAKQLNNLALLCQNQ  
GKYEAVERYYQRALAIYEGQLGPDNPNVARTKNNLASCYLKQGYAEAETLYKEILTRAHVQEFGSVDDD  
HKPIWMHAEEREEMSKSRHHEGGTPYAEYGGWYKACKVSSPTVNTTLRNLGALYRRQGGKLEAAETLEECA  
LRSRRQGTDPISQTKVAELGSDGRRTSQEGPGDSVKFEGGEDASVAVEWSGDGSGLTQRSGLGKIRD  
VLRRSSELLVRKLGTEPRPSSSNMKRAASLNLYLNQPSAAPLQVSRGLSASTMDLSSSS

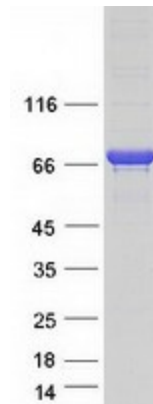
**TRTRPLEQKLISEEDLAANDILDYKDDDDKV**

<b>Tag:</b>	C-Myc/DDK
<b>Predicted MW:</b>	68.5 kDa
<b>Concentration:</b>	>0.05 µg/µL as determined by microplate BCA method
<b>Purity:</b>	> 80% as determined by SDS-PAGE and Coomassie blue staining
<b>Buffer:</b>	25 mM Tris-HCl, 100 mM glycine, pH 7.3, 10% glycerol
<b>Preparation:</b>	Recombinant protein was captured through anti-DDK affinity column followed by conventional chromatography steps.
<b>Note:</b>	For testing in cell culture applications, please filter before use. Note that you may experience some loss of protein during the filtration process.
<b>Storage:</b>	Store at -80°C.



[View online »](#)

<b>Stability:</b>	Stable for 12 months from the date of receipt of the product under proper storage and handling conditions. Avoid repeated freeze-thaw cycles.
<b>RefSeq:</b>	<a href="#">NP_958929</a>
<b>Locus ID:</b>	89953
<b>UniProt ID:</b>	<a href="#">Q9NSK0</a> , <a href="#">A0A024RCZ8</a>
<b>RefSeq Size:</b>	2404
<b>Cytogenetics:</b>	6p21.1
<b>RefSeq ORF:</b>	1857
<b>Synonyms:</b>	bA387M24.3; KNSL8
<b>Summary:</b>	Kinesin is a microtubule-associated force-producing protein that may play a role in organelle transport. The light chain may function in coupling of cargo to the heavy chain or in the modulation of its ATPase activity (By similarity).[UniProtKB/Swiss-Prot Function]
<b>Protein Families:</b>	Druggable Genome

**Product images:**

Coomassie blue staining of purified KLC4 protein (Cat# [TP310268]). The protein was produced from HEK293T cells transfected with KLC4 cDNA clone (Cat# [RC210268]) using MegaTran 2.0 (Cat# [TT210002]).