

Product datasheet for **TP310268L**

KLC4 (NM_201521) Human Recombinant Protein

Product data:

Product Type:	Recombinant Proteins
Description:	Recombinant protein of human kinesin light chain 4 (KLC4), transcript variant 1, 1 mg
Species:	Human
Expression Host:	HEK293T
Expression cDNA Clone or AA Sequence:	>RC210268 protein sequence Red =Cloning site Green =Tags(s)

MSGLVLGQRDEPAGHRLSQEEILGSTRLVSQGLEALRSEHQAVLQSLSQTIECLQGGHEEGLVHEKARQ
LRRSMENIELGLSEAQVMLALASHLSTVESEKQKLRAQVRRRCQENQWLRDELAGTQQRQRSEQAVAQL
EEEKHLLEFLGQLRQYDEDGHTSEEKEGDATKDSLDDLFPNEEEEDPSNGLSRGQGATAAQGGYEIPAR
LRTLHNLVIQYAAQGRYEAVPLCKQALEDLERTSGRGHPDVATMLNILALVYRDQNKYKEAAHLLNDAL
SIRESTLGPDPHPAVAATLNNLAVLYGKRGKYKEAEPLCQRALEIREKVLGTNHPDVAKQLNNLALLCQNQ
GKYEAVERYYYQALAIYEGQLGPDNPNVARTKNNLASCYLKQGKYAEAETLYKEILTRAHVQEFGSVDDD
HKPIWMHAEEREEMSKSRHHEGGTPYAEYGGWYKACKVSSPTVNTTLRNLGALYRRQGGKLEAAETLEECA
LRSRRQGTDPISQTKVAELGSDGRRTSQEGPGDSVKFEGGEDASVAVEWSGDGSGLTLQRSGLGKIRD
VLRRSSELLVRKLGTEPRPSSSNMKRAASLNLYLNQPSAAPLQVSRGLSASTMDLSSSS

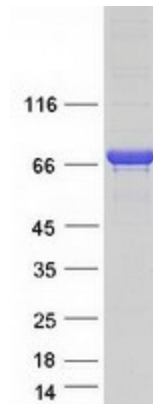
TRTRPLEQKLISEEDLAANDILDYKDDDDKV

Tag:	C-Myc/DDK
Predicted MW:	68.5 kDa
Concentration:	>0.05 µg/µL as determined by microplate BCA method
Purity:	> 80% as determined by SDS-PAGE and Coomassie blue staining
Buffer:	25 mM Tris-HCl, 100 mM glycine, pH 7.3, 10% glycerol
Preparation:	Recombinant protein was captured through anti-DDK affinity column followed by conventional chromatography steps.
Note:	For testing in cell culture applications, please filter before use. Note that you may experience some loss of protein during the filtration process.
Storage:	Store at -80°C.



[View online »](#)

Stability:	Stable for 12 months from the date of receipt of the product under proper storage and handling conditions. Avoid repeated freeze-thaw cycles.
RefSeq:	NP_958929
Locus ID:	89953
UniProt ID:	Q9NSK0 , A0A024RCZ8
RefSeq Size:	2404
Cytogenetics:	6p21.1
RefSeq ORF:	1857
Synonyms:	bA387M24.3; KNSL8
Summary:	Kinesin is a microtubule-associated force-producing protein that may play a role in organelle transport. The light chain may function in coupling of cargo to the heavy chain or in the modulation of its ATPase activity (By similarity).[UniProtKB/Swiss-Prot Function]
Protein Families:	Druggable Genome

Product images:

Coomassie blue staining of purified KLC4 protein (Cat# [TP310268]). The protein was produced from HEK293T cells transfected with KLC4 cDNA clone (Cat# [RC210268]) using MegaTran 2.0 (Cat# [TT210002]).