

## Product datasheet for **TP310265M**

### **EPS8L2 (NM\_022772) Human Recombinant Protein**

#### Product data:

Product Type:	Recombinant Proteins
Description:	Recombinant protein of human EPS8-like 2 (EPS8L2), 100 µg
Species:	Human
Expression Host:	HEK293T
Expression cDNA Clone or AA Sequence:	>RC210265 protein sequence <b>Red</b> =Cloning site <b>Green</b> =Tags(s)

MSQSGAVSCCPGATNGSLGRSDGVAKMSPKDLFEQRKKYSNSNVIMHETSQYHVQHLATFIMDKSEAITS  
VDDAIRKLVQLSSKEKIWTQEMLLQVNDQSLRLLDIESQEELEDFPLPTVQRSQTVLNQLRYPSVLLLVC  
QDSEQSKPDVHFFHCDEVEAELVHEDIESALADCR LGKKMRPQTLKGHQEKIRQRQSILPPPQGPAPIPF  
QHRGGDSPEAKNRVGPQVPLSEPGFRRRESQEEPRAVLAQKIEKETQILNCALDDIEWFVARLQKAAEAF  
KQLNQRKKGKKKGAEGVLT LRARPPSEGEFIDCFQKIKLAINLLAKLQKHIQNPSAAELVHFLFGP  
LDLIVNTCSGPD IARSVSCPLLSRDAVD FLRGHLVPKEMSLWESLGESWMRPRSEWPREPQVPLYVPKFH  
SGWEPPVDVLQEAPWEVEGLASAPIEEVSPVSRQSIRNSQKHSPTSEPTPPGDALPPVSSPHTHRQYQPT  
PAMAKYVKILYDFTARNANELSVLKDEVLEVLEDGRQWWKLRSRSGQAGYVPCNILGEARPEDAGAPFEQ  
AGQKYWGPASPTHKLPSPFGNKDELMQHMDEVNDELIRKISNIRAQPQRHFRVERSQPVSQPLTYESGP  
DEVRAWLEAKAFSPRIVENLGILTGPFSLNKEELKKVCGEEGVRVYSQLTMQKAFLEKQQSGSELEEL  
MNKFHSMNQRRGEDS

**TRTRPLEQKLISEEDLAANDILDYKDDDDKV**

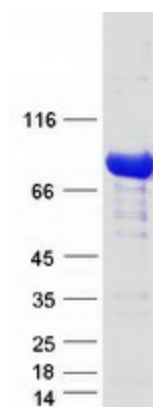
Tag:	C-Myc/DDK
Predicted MW:	80.4 kDa
Concentration:	>0.05 µg/µL as determined by microplate BCA method
Purity:	> 80% as determined by SDS-PAGE and Coomassie blue staining
Buffer:	25 mM Tris-HCl, 100 mM glycine, pH 7.3, 10% glycerol
Preparation:	Recombinant protein was captured through anti-DDK affinity column followed by conventional chromatography steps.
Note:	For testing in cell culture applications, please filter before use. Note that you may experience some loss of protein during the filtration process.
Storage:	Store at -80°C.



[View online »](#)

<b>Stability:</b>	Stable for 12 months from the date of receipt of the product under proper storage and handling conditions. Avoid repeated freeze-thaw cycles.
<b>RefSeq:</b>	<u>NP_073609</u>
<b>Locus ID:</b>	64787
<b>UniProt ID:</b>	<u>Q9H6S3</u>
<b>RefSeq Size:</b>	3156
<b>Cytogenetics:</b>	11p15.5
<b>RefSeq ORF:</b>	2145
<b>Synonyms:</b>	DFNB106; EPS8R2
<b>Summary:</b>	This gene encodes a member of the EPS8 gene family. The encoded protein, like other members of the family, is thought to link growth factor stimulation to actin organization, generating functional redundancy in the pathways that regulate actin cytoskeletal remodeling. [provided by RefSeq, Dec 2008]
<b>Protein Families:</b>	Druggable Genome

### Product images:



Coomassie blue staining of purified EPS8L2 protein (Cat# [TP310265]). The protein was produced from HEK293T cells transfected with EPS8L2 cDNA clone (Cat# [RC210265]) using MegaTran 2.0 (Cat# [TT210002]).