

Product datasheet for **TP310265**

EPS8L2 (NM_022772) Human Recombinant Protein

Product data:

Product Type:	Recombinant Proteins
Description:	Recombinant protein of human EPS8-like 2 (EPS8L2), 20 µg
Species:	Human
Expression Host:	HEK293T
Expression cDNA Clone or AA Sequence:	>RC210265 protein sequence Red =Cloning site Green =Tags(s)

MSQSGAVSCCPGATNGSLGRSDGVAKMSPKDLFEQRKKYSNSNVIMHETSQYHVQHLLATFIMDKSEAIT
 S
 VDDAIRKLVQLSSKEKIWTQEMLLQVNDQSLRLLDIESQEELEDFPLPTVQRSQTVLNQLRYPVLLVC
 QDSEQSKPDVHFFHCDEVEAELVHEDIESALADCRLGKKMRPQTLKGHEKIRQRQSILPPPQGPAPIPF
 QHRGGDSPEAKNRVGPQVPLSEPGFRRRESQEEPRAVLAQKIEKETQILNCALDDIEWFVARLQKAAEAF
 KQLNQRKKGKKKGKKAPAEGLTLRARPPSEGEFIDCFQKIKLAINLLAKLQKHIQNPSAAELVHFLFGP
 LDLIVNTCSGPDIAHSVSCPLSRDAVDFLRGHLVPKEMSLWESLGESWMPRSEWPREPQVPLYVPKFH
 SGWEPPVDVLQEAPWEVEGLASAPIEEVSPVSRQSIRNSQKHSPTSEPTPPGDALPPVSSPHTHRGYQPT
 PAMAKYVKILYDFTARNANELSVLKDEVLEVLEDGRQWWKLRSRSGQAGYVPCNILGEARPEDAGAPFEQ
 AGQKYWGPASPTHKLPPSPFPGNKDELMQHMDEVNDELIRKISNIRAQPQRHFRVERSQPVSQPLTYESG
 P
 DEVRAWLEAKAFSPRIVENLGILTGPQLFSLNKEELKKVCGEEGVRVYSQTMQKAFLEKQQSGSELEEL
 MNKFHSMNQRRGEDS

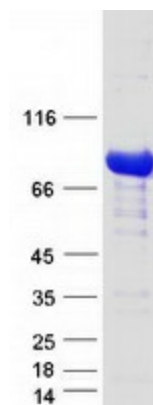
TRTRPLEQKLISEEDLAANDILDYKDDDDKV

Tag:	C-Myc/DDK
Predicted MW:	80.4 kDa
Concentration:	>0.05 µg/µL as determined by microplate BCA method
Purity:	> 80% as determined by SDS-PAGE and Coomassie blue staining
Buffer:	25 mM Tris-HCl, 100 mM glycine, pH 7.3, 10% glycerol
Preparation:	Recombinant protein was captured through anti-DDK affinity column followed by conventional chromatography steps.


[View online »](#)

Note:	For testing in cell culture applications, please filter before use. Note that you may experience some loss of protein during the filtration process.
Storage:	Store at -80°C.
Stability:	Stable for 12 months from the date of receipt of the product under proper storage and handling conditions. Avoid repeated freeze-thaw cycles.
RefSeq:	NP_073609
Locus ID:	64787
UniProt ID:	Q9H6S3
RefSeq Size:	3156
Cytogenetics:	11p15.5
RefSeq ORF:	2145
Synonyms:	DFNB106; EPS8R2
Summary:	This gene encodes a member of the EPS8 gene family. The encoded protein, like other members of the family, is thought to link growth factor stimulation to actin organization, generating functional redundancy in the pathways that regulate actin cytoskeletal remodeling. [provided by RefSeq, Dec 2008]
Protein Families:	Druggable Genome

Product images:



Coomassie blue staining of purified EPS8L2 protein (Cat# TP310265). The protein was produced from HEK293T cells transfected with EPS8L2 cDNA clone (Cat# [RC210265]) using MegaTran 2.0 (Cat# [TT210002]).