

## Product datasheet for TP310261L

### TMEPAI (PMEPA1) (NM\_199171) Human Recombinant Protein

#### Product data:

Product Type:	Recombinant Proteins
Description:	Recombinant protein of human prostate transmembrane protein, androgen induced 1 (PMEPA1), transcript variant 4, 1 mg
Species:	Human
Expression Host:	HEK293T
Expression cDNA Clone or AA Sequence:	>RC210261 protein sequence <b>Red</b> =Cloning site <b>Green</b> =Tags(s)
	MAELEFVQIIIIIVMMVMVVITCLLSHYKLSARSFISWHSQGRRRREDALSSEGCLWPSESTVSGNGIP EPQVYAPPRPTDRLAVPPFAQRERFHRFQPTYPLQHEIDLPTISLSDGEEPPPYQGPGCTLQLRDPEQQ LELNRESVRAPPNRTIFDSDLMSARLGGPCPPSSNSGISATCYGSGGRMEGPPPTYSEVIGHYPGSSSQ HQQSSGPPSLLEGTRLHHTHIAPLESAAIWSKEKDKQKGHPL
	<b>TRTRPLEQKLISEEDLAANDILDYKDDDDKV</b>
Tag:	C-Myc/DDK
Predicted MW:	26 kDa
Concentration:	>0.05 µg/µL as determined by microplate BCA method
Purity:	> 80% as determined by SDS-PAGE and Coomassie blue staining
Buffer:	25 mM Tris-HCl, 100 mM glycine, pH 7.3, 10% glycerol
Preparation:	Recombinant protein was captured through anti-DDK affinity column followed by conventional chromatography steps.
Note:	For testing in cell culture applications, please filter before use. Note that you may experience some loss of protein during the filtration process.
Storage:	Store at -80°C.
Stability:	Stable for 12 months from the date of receipt of the product under proper storage and handling conditions. Avoid repeated freeze-thaw cycles.
RefSeq:	<u><a href="#">NP_954640</a></u>
Locus ID:	56937



[View online »](#)

UniProt ID: [Q969W9](#)

RefSeq Size: 4645

Cytogenetics: 20q13.31

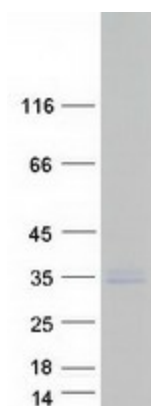
RefSeq ORF: 759

Synonyms: STAG1; TMEPAI

**Summary:** This gene encodes a transmembrane protein that contains a Smad interacting motif (SIM). Expression of this gene is induced by androgens and transforming growth factor beta, and the encoded protein suppresses the androgen receptor and transforming growth factor beta signaling pathways through interactions with Smad proteins. Overexpression of this gene may play a role in multiple types of cancer. Alternatively spliced transcript variants encoding multiple isoforms have been observed for this gene. [provided by RefSeq, Dec 2011]

**Protein Families:** Druggable Genome, Transmembrane

### Product images:



Coomassie blue staining of purified PMEPA1 protein (Cat# [TP310261]). The protein was produced from HEK293T cells transfected with PMEPA1 cDNA clone (Cat# [RC210261]) using MegaTran 2.0 (Cat# [TT210002]).