

## Product datasheet for **TP310259**

### H2AC6 (NM\_003512) Human Recombinant Protein

#### Product data:

Product Type:	Recombinant Proteins
Description:	Recombinant protein of human histone cluster 1, H2ac (HIST1H2AC), 20 µg
Species:	Human
Expression Host:	HEK293T
Expression cDNA Clone or AA Sequence:	>RC210259 representing NM_003512 <b>Red</b> =Cloning site <b>Green</b> =Tags(s)  MSGRGKQGGKARAKAKSRSSRAGLQFPVGRVHLLRKGNYAERVGAGAPVYLAHVLEYLTAEILELAGNA ARDNKKTRIIPRHLQLAIRNDEELNKLGRVTIAQGGVLPNIQAVLLPKKTESHHKAKGK  <b>TRTRPLEQKLISEEDLAANDILDYKDDDDKV</b>
Tag:	C-Myc/DDK
Predicted MW:	13.9 kDa
Concentration:	>0.05 µg/µL as determined by microplate BCA method
Purity:	> 80% as determined by SDS-PAGE and Coomassie blue staining
Buffer:	25 mM Tris-HCl, 100 mM glycine, pH 7.3, 10% glycerol
Preparation:	Recombinant protein was captured through anti-DDK affinity column followed by conventional chromatography steps.
Note:	For testing in cell culture applications, please filter before use. Note that you may experience some loss of protein during the filtration process.
Storage:	Store at -80°C.
Stability:	Stable for 12 months from the date of receipt of the product under proper storage and handling conditions. Avoid repeated freeze-thaw cycles.
RefSeq:	<a href="#">NP_003503</a>
Locus ID:	8334
UniProt ID:	<a href="#">Q93077</a> , <a href="#">A0A024R017</a>
RefSeq Size:	546
Cytogenetics:	6p22.2



[View online »](#)

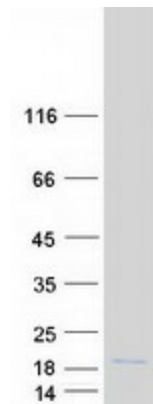
RefSeq ORF: 390

Synonyms: dj221C16.4; H2A/I; H2AFL; HIST1H2AC

**Summary:** Histones are basic nuclear proteins that are responsible for the nucleosome structure of the chromosomal fiber in eukaryotes. Two molecules of each of the four core histones (H2A, H2B, H3, and H4) form an octamer, around which approximately 146 bp of DNA is wrapped in repeating units, called nucleosomes. The linker histone, H1, interacts with linker DNA between nucleosomes and functions in the compaction of chromatin into higher order structures. This gene is intronless and encodes a replication-dependent histone that is a member of the histone H2A family. Transcripts from this gene lack polyA tails but instead contain a palindromic termination element. This gene is found in the large histone gene cluster on chromosome 6. [provided by RefSeq, Aug 2015]

**Protein Pathways:** Systemic lupus erythematosus

### Product images:



Coomassie blue staining of purified HIST1H2AC protein (Cat# TP310259). The protein was produced from HEK293T cells transfected with HIST1H2AC cDNA clone (Cat# [RC210259]) using MegaTran 2.0 (Cat# [TT210002]).