

Product datasheet for **TP310256L**

Mint3 (APBA3) (NM_004886) Human Recombinant Protein

Product data:

Product Type:	Recombinant Proteins
Description:	Recombinant protein of human amyloid beta (A4) precursor protein-binding, family A, member 3 (APBA3), 1 mg
Species:	Human
Expression Host:	HEK293T
Expression cDNA Clone or AA Sequence:	>RC210256 protein sequence Red =Cloning site Green =Tags(s)

MDFPTISRSPSGPPAMDLEGPRDILVPSEDLTPDSQWDPMPGGPGSLSRMELDESSLQELVQQFEALPGD
LVGPSPGGAPCPLHIATGHGLASQEIADAHGLLSAEAGRDDLGLLHCEECPSSQTGPEEPLEPAPRLLQ
PPEDPDESDSPEWVEGASAEQEGSRSSSSPEPWLETVPLVTPPEPPAGAQSPELASYPAPQEVGPGC
DHEDLLDGVIFGARYLGSTQLVSERNPPTSTRMAQAREAMDRVKAPDGETQPMTEVDLDFVSTKRIKVLTA
DSQEAMMDHALHTISYTADIGCVLVLMMARRRLARRPAPQDHGRRLYKMLCHVFYAEDAQLIAQAIGQAF
AAYSQFLRESGIDPSQVGVHPSPGACHLHNGDLDFHSNSDNCREVHLEKRRGEGLGVALVESGWGSLPT
AVIANLLHGGPAERSGALSIGDRLTAINGTSLVGLPLAACQAAVRETKSQTSVTLSIVHCPPVTTAIHR
PHAREQLGFCVEDGIICSLLRGGIAERGGIRVGHRIEINGQSVWATPHARIIELLTEAYGEVHIKTMPA
ATYRLLTGQEQPVYL

TRTRPLEQKLISEEDLAANDILDYKDDDDKV

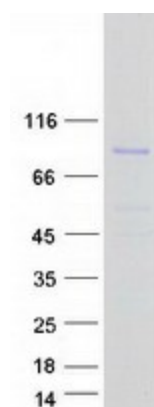
Tag:	C-Myc/DDK
Predicted MW:	61.3 kDa
Concentration:	>0.05 µg/µL as determined by microplate BCA method
Purity:	> 80% as determined by SDS-PAGE and Coomassie blue staining
Buffer:	25 mM Tris-HCl, 100 mM glycine, pH 7.3, 10% glycerol
Preparation:	Recombinant protein was captured through anti-DDK affinity column followed by conventional chromatography steps.
Note:	For testing in cell culture applications, please filter before use. Note that you may experience some loss of protein during the filtration process.
Storage:	Store at -80°C.



[View online »](#)

Stability:	Stable for 12 months from the date of receipt of the product under proper storage and handling conditions. Avoid repeated freeze-thaw cycles.
RefSeq:	<u>NP_004877</u>
Locus ID:	9546
UniProt ID:	<u>O96018</u>
RefSeq Size:	2158
Cytogenetics:	19p13.3
RefSeq ORF:	1725
Synonyms:	MGC:15815; mint3; X11L2
Summary:	The protein encoded by this gene is a member of the X11 protein family. It is an adapter protein that interacts with the Alzheimer's disease amyloid precursor protein. This gene product is believed to be involved in signal transduction processes. This gene is a candidate gene for Alzheimer's disease. [provided by RefSeq, Jul 2008]

Product images:



Coomassie blue staining of purified APBA3 protein (Cat# [TP310256]). The protein was produced from HEK293T cells transfected with APBA3 cDNA clone (Cat# [RC210256]) using MegaTran 2.0 (Cat# [TT210002]).