

Product datasheet for **TP310250M**

PBX2 (NM_002586) Human Recombinant Protein

Product data:

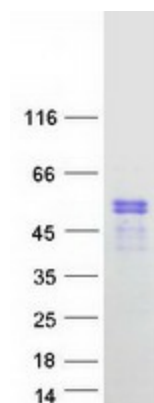
Product Type:	Recombinant Proteins
Description:	Recombinant protein of human pre-B-cell leukemia homeobox 2 (PBX2), 100 µg
Species:	Human
Expression Host:	HEK293T
Expression cDNA Clone or AA Sequence:	>RC210250 representing NM_002586 Red =Cloning site Green =Tags(s)
	<p>MDERLLGPPPPGGGRGGLGLVSGEPGGPGEPGGGDPGGGSGGVPGGRGKQDIGDILQQIMTITDQSL DE AQAKKHALNCHRMKPALFSVLCEIKEKTGLSIRSSQEEEPVDPQLMRLDNMLLAEGVAGPEKGGGSA AAAAASGGGVSPDNSIEHSDYRSKLAQIRHIYHSELEKYEQACNEFTTHVMNLLREQSRTRPVAPKEMER MVSIIHRKFSAIQMQLKQSTCEAVMILRSRFLDARRKRRNFSKQATEVLNEYFYSHLSNPYPSEEAKEEL AKKCGITVSQVSNWFGNKRIRYKKNIGKFQEEANIYAVKTAVSVTQGGHSRTSSPTPPSSAGSGGSFNLS GSGDMFLGMPGLNGDSYSASQVESLRHSMGPGGYGDNLGGGQMYSPREMRANGSWQEAVTPSSVTS TEG PGSVHSDTSN</p> <p>TRTRPLEQKLISEEDLAANDILDYKDDDDKV</p>
Tag:	C-Myc/DDK
Predicted MW:	45.7 kDa
Concentration:	>0.05 µg/µL as determined by microplate BCA method
Purity:	> 80% as determined by SDS-PAGE and Coomassie blue staining
Buffer:	25 mM Tris-HCl, 100 mM glycine, pH 7.3, 10% glycerol
Preparation:	Recombinant protein was captured through anti-DDK affinity column followed by conventional chromatography steps.
Note:	For testing in cell culture applications, please filter before use. Note that you may experience some loss of protein during the filtration process.
Storage:	Store at -80°C.



[View online »](#)

Stability:	Stable for 12 months from the date of receipt of the product under proper storage and handling conditions. Avoid repeated freeze-thaw cycles.
RefSeq:	<u>NP_002577</u>
Locus ID:	5089
UniProt ID:	<u>P40425</u>
RefSeq Size:	3231
Cytogenetics:	6p21.32
RefSeq ORF:	1290
Synonyms:	G17; HOX12; PBX2MHC
Summary:	This gene encodes a ubiquitously expressed member of the TALE/PBX homeobox family. It was identified by its similarity to a homeobox gene which is involved in t(1;19) translocation in acute pre-B-cell leukemias. This protein is a transcriptional activator which binds to the TLX1 promoter. The gene is located within the major histocompatibility complex (MHC) on chromosome 6. [provided by RefSeq, Jul 2008]
Protein Families:	Transcription Factors

Product images:



Coomassie blue staining of purified PBX2 protein (Cat# [TP310250]). The protein was produced from HEK293T cells transfected with PBX2 cDNA clone (Cat# [RC210250]) using MegaTran 2.0 (Cat# [TT210002]).