

## Product datasheet for **TP310250**

### **PBX2 (NM\_002586) Human Recombinant Protein**

#### Product data:

**Product Type:** Recombinant Proteins

**Description:** Recombinant protein of human pre-B-cell leukemia homeobox 2 (PBX2), 20 µg

**Species:** Human

**Expression Host:** HEK293T

**Expression cDNA** >RC210250 representing NM\_002586

**Clone or AA** **Red**=Cloning site **Green**=Tags(s)

**Sequence:**

MDERLLGPPPPGGGRGGLGLVSGEPGGPGPEPPGGGDPGGGSGGVPGGRGKQDIGDILQQIMTITDQSLDE  
AQAKKHALNCHRMKPALFVLC EIKEKTGLSIRSSQEEEPVDPQLMRLDNMLLAEGVAGPEKGGGSAAAA  
AAAAASGGGVSPDNSIEHSDYRSKLAQIRHIYHSELEKYEQACNEFTTHVMNLLREQSRTRPVAPKEMER  
MVSIIHRKFSAIQMQLKQSTCEAVMILRSRFLDARRKRRNFSKQATEVLNEYFYSHLSNPYPSEEAKEEL  
AKKCGITVSQVSNWFGNKRIRYKKNIGKFQEEANIYAVKTAVSVTQGGHSRTSSPTPPSSAGSGGSFNLS  
GSGDMFLGMPGLNGDSYSASQVESLRHSMGPGGYGDNLGGGQMYSPREMRANGSWQEAVTPSSVTSPTTEG  
PGSVHSDTSN

**TRTRPLEQKLISEEDLAANDILDYKDDDDKV**

**Tag:** C-Myc/DDK

**Predicted MW:** 45.7 kDa

**Concentration:** >0.05 µg/µL as determined by microplate BCA method

**Purity:** > 80% as determined by SDS-PAGE and Coomassie blue staining

**Buffer:** 25 mM Tris-HCl, 100 mM glycine, pH 7.3, 10% glycerol

**Preparation:** Recombinant protein was captured through anti-DDK affinity column followed by conventional chromatography steps.

**Note:** For testing in cell culture applications, please filter before use. Note that you may experience some loss of protein during the filtration process.

**Storage:** Store at -80°C.

**Stability:** Stable for 12 months from the date of receipt of the product under proper storage and handling conditions. Avoid repeated freeze-thaw cycles.

**RefSeq:** [NP\\_002577](#)



[View online »](#)

Locus ID: 5089

UniProt ID: [P40425](#), [A0A024RCR3](#)

RefSeq Size: 3231

Cytogenetics: 6p21.32

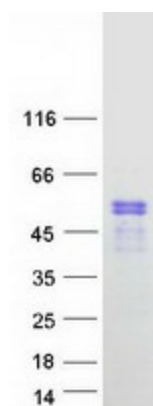
RefSeq ORF: 1290

Synonyms: G17; HOX12; PBX2MHC

**Summary:** This gene encodes a ubiquitously expressed member of the TALE/PBX homeobox family. It was identified by its similarity to a homeobox gene which is involved in t(1;19) translocation in acute pre-B-cell leukemias. This protein is a transcriptional activator which binds to the TLX1 promoter. The gene is located within the major histocompatibility complex (MHC) on chromosome 6. [provided by RefSeq, Jul 2008]

**Protein Families:** Transcription Factors

### Product images:



Coomassie blue staining of purified PBX2 protein (Cat# TP310250). The protein was produced from HEK293T cells transfected with PBX2 cDNA clone (Cat# [RC210250]) using MegaTran 2.0 (Cat# [TT210002]).