

## Product datasheet for **TP310245SE**

### Macrophage Inflammatory Protein 4 (CCL18) (NM\_002988) Human Recombinant Protein

#### Product data:

Product Type:	Recombinant Proteins
Description:	Purified recombinant protein of Human chemokine (C-C motif) ligand 18 (pulmonary and activation-regulated) (CCL18), secretory expressed in HEK293T cells, 20ug
Species:	Human
Expression Host:	HEK293T
Expression cDNA Clone or AA Sequence:	>RC210245 protein sequence <span style="color: red;">Red</span> =Cloning site <span style="color: green;">Green</span> =Tags(s)  MKGLAAALLVLVCTMALCSCAQVGTNKECLLVYTSWQIPQKFIVDYSETSPQCPKPGVILLTKRGRQIC ADPNKKWVQKYISDLKLN  <span style="color: red;">TR</span> <span style="color: green;">TRPLEQKLISEEDLAANDILDYKDDDDKV</span>
Tag:	C-Myc/DDK
Predicted MW:	11.5 kDa
Concentration:	>50 ug/mL as determined by microplate Bradford method
Purity:	> 80% as determined by SDS-PAGE and Coomassie blue staining
Buffer:	25mM Tris-HCl, pH7.3, 100mM glycine, 10% glycerol
Note:	For culture applications, please filter before use. Note that you may experience some loss of protein during the filtration process.
Storage:	Store at -80°C after receiving vials.
Stability:	Stable for at least 1 year from receipt of products under proper storage and handling conditions. Avoid repeated freeze-thaw cycles.
RefSeq:	<u><a href="#">NP_002979</a></u>
Locus ID:	6362
UniProt ID:	<u><a href="#">P55774</a></u>
RefSeq Size:	798
Cytogenetics:	17q12
RefSeq ORF:	267


[View online »](#)

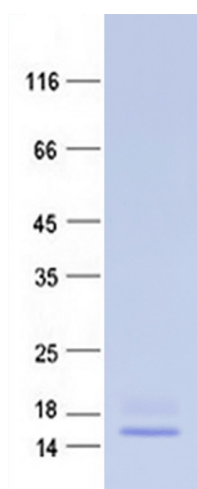
**Synonyms:** AMAC-1; AMAC1; CKb7; DC-CK1; DCCK1; MIP-4; PARC; SCYA18

**Summary:** This antimicrobial gene is one of several Cys-Cys (CC) cytokine genes clustered on the q arm of chromosome 17. Cytokines are a family of secreted proteins involved in immunoregulatory and inflammatory processes. The CC cytokines are proteins characterized by two adjacent cysteines. The cytokine encoded by this gene displays chemotactic activity for naive T cells, CD4+ and CD8+ T cells and nonactivated lymphocytes, but not for monocytes or granulocytes. This chemokine attracts naive T lymphocytes toward dendritic cells and activated macrophages in lymph nodes. It may play a role in both humoral and cell-mediated immunity responses. [provided by RefSeq, Sep 2014]

**Protein Families:** Druggable Genome, Secreted Protein

**Protein Pathways:** Chemokine signaling pathway, Cytokine-cytokine receptor interaction

## Product images:



Coomassie blue staining of purified CCL18 protein (Cat #TP310245SE). The protein was produced from mammalian cells transfected with CCL18 cDNA clone (Cat #[RC210245]).