

Product datasheet for **TP310245M**

Macrophage Inflammatory Protein 4 (CCL18) (NM_002988) Human Recombinant Protein

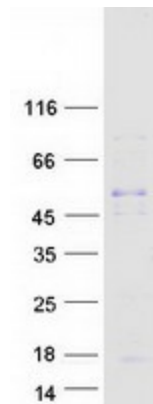
Product data:

Product Type:	Recombinant Proteins
Description:	Recombinant protein of human chemokine (C-C motif) ligand 18 (pulmonary and activation-regulated) (CCL18), 100 µg
Species:	Human
Expression Host:	HEK293T
Expression cDNA Clone or AA Sequence:	>RC210245 protein sequence Red =Cloning site Green =Tags(s)
	MKGLAAALLVLVCTMALCSCAQVGTNKELCCLVYTSWQIPQKFIVDYSETSPQCPKPGVILLTKRGRQIC ADPNKKWVQKYISDLKLNA
	TRTRPLEQKLISEEDLAANDILDYKDDDDKV
Tag:	C-Myc/DDK
Predicted MW:	9.7 kDa
Concentration:	>0.05 µg/µL as determined by microplate BCA method
Purity:	> 80% as determined by SDS-PAGE and Coomassie blue staining
Buffer:	25 mM Tris-HCl, 100 mM glycine, pH 7.3, 10% glycerol
Preparation:	Recombinant protein was captured through anti-DDK affinity column followed by conventional chromatography steps.
Note:	For testing in cell culture applications, please filter before use. Note that you may experience some loss of protein during the filtration process.
Storage:	Store at -80°C.
Stability:	Stable for 12 months from the date of receipt of the product under proper storage and handling conditions. Avoid repeated freeze-thaw cycles.
RefSeq:	NP_002979
Locus ID:	6362
UniProt ID:	P55774
RefSeq Size:	798



[View online »](#)

Cytogenetics:	17q12
RefSeq ORF:	267
Synonyms:	AMAC-1; AMAC1; CKb7; DC-CK1; DCCK1; MIP-4; PARC; SCYA18
Summary:	This antimicrobial gene is one of several Cys-Cys (CC) cytokine genes clustered on the q arm of chromosome 17. Cytokines are a family of secreted proteins involved in immunoregulatory and inflammatory processes. The CC cytokines are proteins characterized by two adjacent cysteines. The cytokine encoded by this gene displays chemotactic activity for naive T cells, CD4+ and CD8+ T cells and nonactivated lymphocytes, but not for monocytes or granulocytes. This chemokine attracts naive T lymphocytes toward dendritic cells and activated macrophages in lymph nodes. It may play a role in both humoral and cell-mediated immunity responses. [provided by RefSeq, Sep 2014]
Protein Families:	Druggable Genome, Secreted Protein
Protein Pathways:	Chemokine signaling pathway, Cytokine-cytokine receptor interaction

Product images:

Coomassie blue staining of purified CCL18 protein (Cat# [TP310245]). The protein was produced from HEK293T cells transfected with CCL18 cDNA clone (Cat# [RC210245]) using MegaTran 2.0 (Cat# [TT210002]).