

## Product datasheet for **TP310241L**

### SLC10A1 (NM\_003049) Human Recombinant Protein

#### Product data:

Product Type:	Recombinant Proteins
Description:	Purified recombinant protein of Homo sapiens solute carrier family 10 (sodium/bile acid cotransporter family), member 1 (SLC10A1), 1 mg
Species:	Human
Expression Host:	HEK293T
Expression cDNA Clone or AA Sequence:	>RC210241 representing NM_003049 Red=Cloning site Green=Tags(s)

MEAHNASAPFNFTLPPNFGKRPTDLALSIVLVMFLFFIMLSLGCTMEFSKIKAHLWPKGLAIALVAQYG  
IMPLTAFVLGKVFRLKNIEALAILVCGCSPGGNLSNVFSLAMKGMNLSIVMTTCSTFCALGMMPLLLYI  
YSRGIYDGDLDKDKVPYKGVISLVLVLPCTIGIVLKSRRPQYMRYVIKGGMIILLCSVAVTVLSAINV  
GKSIMFAMTPLLIATSSLMPFIGFLLGYVLSALFCLNGRCRRTVSMETGCQNVQLCSTILNVAFPPEVIG  
PLFFFPLLYMIFQLGEGLLLIAIFWCYEKFKTPKDKTKMIYTAATTEETIPGALGNGTYKGEDCSPCTA

SGPTRRRRLEQKLISEEDLAANDILDYKDDDDKV

Tag:	C-Myc/DDK
Predicted MW:	37.9 kDa
Concentration:	>0.05 µg/µL as determined by microplate BCA method
Purity:	> 80% as determined by SDS-PAGE and Coomassie blue staining
Buffer:	25 mM Tris-HCl, 100 mM glycine, pH 7.3, 10% glycerol
Preparation:	Recombinant protein was captured through anti-DDK affinity column followed by conventional chromatography steps.
Note:	For testing in cell culture applications, please filter before use. Note that you may experience some loss of protein during the filtration process.
Storage:	Store at -80°C.
Stability:	Stable for 12 months from the date of receipt of the product under proper storage and handling conditions. Avoid repeated freeze-thaw cycles.
RefSeq:	<a href="#">NP_003040</a>
Locus ID:	6554



[View online »](#)

UniProt ID: [Q14973](#), [B2RA41](#)

RefSeq Size: 1580

Cytogenetics: 14q24.1

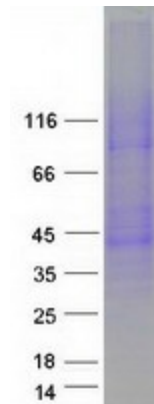
RefSeq ORF: 1047

Synonyms: FHCA2; NTCP

**Summary:** The protein encoded by this gene belongs to the sodium/bile acid cotransporter family, which are integral membrane glycoproteins that participate in the enterohepatic circulation of bile acids. Two homologous transporters are involved in the reabsorption of bile acids; the ileal sodium/bile acid cotransporter with an apical cell localization that absorbs bile acids from the intestinal lumen, bile duct and kidney, and the liver-specific sodium/bile acid cotransporter, represented by this protein, that is found in the basolateral membranes of hepatocytes. Bile acids are the catabolic product of cholesterol metabolism, hence this protein is important for cholesterol homeostasis. [provided by RefSeq, Oct 2011]

**Protein Families:** Druggable Genome, Transmembrane

### Product images:



Coomassie blue staining of purified SLC10A1 protein (Cat# [TP310241]). The protein was produced from HEK293T cells transfected with SLC10A1 cDNA clone (Cat# [RC210241]) using MegaTran 2.0 (Cat# [TT210002]).