

Product datasheet for **TP310236M**

RGS8 (NM_033345) Human Recombinant Protein

Product data:

Product Type:	Recombinant Proteins
Description:	Recombinant protein of human regulator of G-protein signaling 8 (RGS8), transcript variant 1, 100 µg
Species:	Human
Expression Host:	HEK293T
Expression cDNA Clone or AA Sequence:	>RC210236 protein sequence Red =Cloning site Green =Tags(s) MWNTLTRSLSDHPVGKDPQAMRTGQRQNKGMRTLGLCLSHKSDSCSDFTAILPDKPNRALKRLSTEEAT R WADSFVDVLLSHKYGVAAAFRAFLKTEFSEENLEFWLACEEFKKTRSTAKLVSKAHRIFEFEVDVQAPREVN IDFQTREATRKNLQEPSLTCFDQAQGVHSLMEKDSYPRFLRSKMYLDLLSQSQRRLS TR TRPLEQKLISEEDLAANDILDYKDDDDKV
Tag:	C-Myc/DDK
Predicted MW:	22.8 kDa
Concentration:	>0.05 µg/µL as determined by microplate BCA method
Purity:	> 80% as determined by SDS-PAGE and Coomassie blue staining
Buffer:	25 mM Tris-HCl, 100 mM glycine, pH 7.3, 10% glycerol
Preparation:	Recombinant protein was captured through anti-DDK affinity column followed by conventional chromatography steps.
Note:	For testing in cell culture applications, please filter before use. Note that you may experience some loss of protein during the filtration process.
Storage:	Store at -80°C.
Stability:	Stable for 12 months from the date of receipt of the product under proper storage and handling conditions. Avoid repeated freeze-thaw cycles.
RefSeq:	<u>NP_203131</u>
Locus ID:	85397


[View online »](#)

UniProt ID: P57771

RefSeq Size: 783

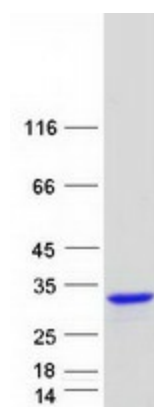
Cytogenetics: 1q25.3

RefSeq ORF: 594

Summary: This gene is a member of the regulator of G protein signaling (RGS) family and encodes a protein with a single RGS domain. Regulator of G protein signaling (RGS) proteins are regulatory and structural components of G protein-coupled receptor complexes. They accelerate transit through the cycle of GTP binding and hydrolysis to GDP, thereby terminating signal transduction, but paradoxically, also accelerate receptor-stimulated activation. [provided by RefSeq, Jul 2008]

Protein Families: Druggable Genome

Product images:



Coomassie blue staining of purified RGS8 protein (Cat# [TP310236]). The protein was produced from HEK293T cells transfected with RGS8 cDNA clone (Cat# [RC210236]) using MegaTran 2.0 (Cat# [TT210002]).