

Product datasheet for **TP310235M**

MMP3 (NM_002422) Human Recombinant Protein

Product data:

Product Type: Recombinant Proteins
Description: Recombinant protein of human matrix metalloproteinase 3 (stromelysin 1, progelatinase) (MMP3), 100 µg

Species: Human

Expression Host: HEK293T

Expression cDNA Clone or AA Sequence: >RC210235 protein sequence
Red=Cloning site **Green**=Tags(s)

MKSLPILLLLCVAVCSAYPLDGAARGEDTSMNLVQKYLENYYDLEKDVKQFVRRKDSGPVWKKIREMQKF
LGLEVTGKLSDTLEV MRKPRCGVPDVGHFRTFPGIPKWRKTHLYRIVNYTPDLPKDAVDSAVEKALKV
WEEVPLTFSRLYEGEADIMISFAVREHGDFYDFDGPVLAHAYAPGPGINGDAHFDDDEQWTKDTTGT
NLFLVAAHEIGHSLGLFHSANTEALMYPLYHSLDLTRFRLSQDDINGIQSLYGGPPD SPETPLVPTEPV
PPEPGTPANCDPALSFDVSTLRGEILIFKDRHFWRKSLRKLPELHLISSFWPSLPSGVDAAYEVT SKD
LVFIFKGNQFWAIRGNEVRAGYPRGIHTLGFPTVRKIDAAISDKEKNKTYFFVEDKYWRFDEKRNSMEP
GFPKQIAEDFPGIDSKIDAVFEFEGFFYFFTGSSQLEFDPNAKKVTHLKSNSWLNC

TRTRPLEQKLISEEDLAANDILDYKDDDDKV

Tag: C-Myc/DDK

Predicted MW: 52.2 kDa

Concentration: >0.05 µg/µL as determined by microplate BCA method

Purity: > 80% as determined by SDS-PAGE and Coomassie blue staining

Buffer: 25 mM Tris-HCl, 100 mM glycine, pH 7.3, 10% glycerol

Preparation: Recombinant protein was captured through anti-DDK affinity column followed by conventional chromatography steps.

Note: For testing in cell culture applications, please filter before use. Note that you may experience some loss of protein during the filtration process.

Storage: Store at -80°C.

Stability: Stable for 12 months from the date of receipt of the product under proper storage and handling conditions. Avoid repeated freeze-thaw cycles.



[View online >](#)

RefSeq: [NP_002413](#)

Locus ID: 4314

UniProt ID: [P08254](#)

RefSeq Size: 1828

Cytogenetics: 11q22.2

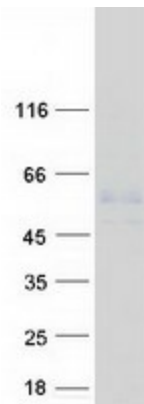
RefSeq ORF: 1431

Synonyms: CHDS6; MMP-3; SL-1; STMY; STMY1; STR1

Summary: Proteins of the matrix metalloproteinase (MMP) family are involved in the breakdown of extracellular matrix in normal physiological processes, such as embryonic development, reproduction, and tissue remodeling, as well as in disease processes, such as arthritis and metastasis. Most MMP's are secreted as inactive proproteins which are activated when cleaved by extracellular proteinases. This gene encodes an enzyme which degrades fibronectin, laminin, collagens III, IV, IX, and X, and cartilage proteoglycans. The enzyme is thought to be involved in wound repair, progression of atherosclerosis, and tumor initiation. The gene is part of a cluster of MMP genes which localize to chromosome 11q22.3. [provided by RefSeq, Jul 2008]

Protein Families: Druggable Genome, Protease

Product images:



Coomassie blue staining of purified MMP3 protein (Cat# [TP310235]). The protein was produced from HEK293T cells transfected with MMP3 cDNA clone (Cat# [RC210235]) using MegaTran 2.0 (Cat# [TT210002]).