

Product datasheet for **TP310234M**

KLRA1 (KLRA1P) (NM_006611) Human Recombinant Protein

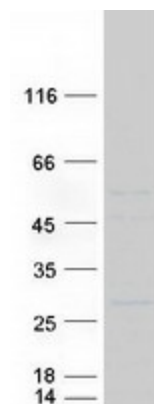
Product data:

Product Type:	Recombinant Proteins
Description:	Recombinant protein of human killer cell lectin-like receptor subfamily A, member 1 (KLRA1), 100 µg
Species:	Human
Expression Host:	HEK293T
Expression cDNA Clone or AA Sequence:	>RC210234 protein sequence Red =Cloning site Green =Tags(s)
	MNDQGEIYSTLRFLQSPSESQNRLRPDDTQRPGKTDDKEFSVPWHLIAVTLGILCLLLLMIVTLVTNIF QCIQEKHQREQILRNCSEKYIMQNDNYLKEQILTNTKLYDVLKNSFQQKKELDSRLIQKNRCHRENEIV FKVLQNTGKFSEDHGSCCGVNCYFTMQKKDWKGCKQTCQHCRSSLLKIDDKDELVFYIHFYSLGLCFSM LDLRY
	TRTRPLEQKLISEEDLAANDILDYKDDDDKV
Tag:	C-Myc/DDK
Predicted MW:	25.3 kDa
Concentration:	>0.05 µg/µL as determined by microplate BCA method
Purity:	> 80% as determined by SDS-PAGE and Coomassie blue staining
Buffer:	25 mM Tris-HCl, 100 mM glycine, pH 7.3, 10% glycerol
Preparation:	Recombinant protein was captured through anti-DDK affinity column followed by conventional chromatography steps.
Note:	For testing in cell culture applications, please filter before use. Note that you may experience some loss of protein during the filtration process.
Storage:	Store at -80°C.
Stability:	Stable for 12 months from the date of receipt of the product under proper storage and handling conditions. Avoid repeated freeze-thaw cycles.
RefSeq:	<u>NP_006602</u>
Locus ID:	10748


[View online »](#)

RefSeq Size:	2208
Cytogenetics:	12p13.2
RefSeq ORF:	645
Synonyms:	A1; class I MHC receptor KLRA22; killer cell lectin-like receptor, subfamily A, member 1; KLRA#; Klra22; Ly-49L; Ly49; Ly49a; LY49L; Ly49o; Ly49v; MGC126520; MGC126522; natural killer cell receptor Ly49A; OTTMUSP00000026268
Protein Families:	Transmembrane

Product images:



Coomassie blue staining of purified KLRA1 protein (Cat# [TP310234]). The protein was produced from HEK293T cells transfected with KLRA1 cDNA clone (Cat# [RC210234]) using MegaTran 2.0 (Cat# [TT210002]).