

Product datasheet for TP310231L

CYP2C18 (NM_000772) Human Recombinant Protein

Product data:

Product Type:	Recombinant Proteins
Description:	Recombinant protein of human cytochrome P450, family 2, subfamily C, polypeptide 18 (CYP2C18), transcript variant 1, 1 mg
Species:	Human
Expression Host:	HEK293T
Expression cDNA Clone or AA Sequence:	>RC210231 representing NM_000772 Red=Cloning site Green=Tags(s)

MDPAVALVLCLSCLFLLSLWRQSSGRGRLPSGPTPLPIIGNILQLDVKDMSKSLTNFSKVYGPVFTVYFG
LKPIVVLHGVEAVKEALIDHGEEFSGRGSFPVAEKVNKGLGILFSNGKRWKEIRRFCLMTRLNFMGMKRS
IEDRVQEEARCLVEELRKTNASPCDPTFILGCAPCNVICSVIFHDRFDYKDQRFNLNMEKFNENLRILSS
PWIQVCNNFPALIDYLPGSHNKAENFAYIKSYVLERIKEHQESLDMNSARDFIDCFLIKMEQEKHNQQS
EFTVESLIATVTDMFGAGTETTSTTLRYGLLLLLKYPEVTAKVQEEIECVGRNRSPCMQDRSHMPYTDA
VVHEIQRYIDLLPTNLPHAVTCDFKFKNYLIPKGTIITSLTSVLHNDKEFPNPEMFDPGHFLDKSGNFK
KSDYFMPFSAGKRMCMGEGLARMEFLFLTTLQNFNLKSQVDPKDIDITPIANAFGRVPPPLYQLCFIPV

TRTRPLEQKLISEEDLAANDILDYKDDDDKV

Tag:	C-Myc/DDK
Predicted MW:	55.5 kDa
Concentration:	>0.05 µg/µL as determined by microplate BCA method
Purity:	> 80% as determined by SDS-PAGE and Coomassie blue staining
Buffer:	25 mM Tris-HCl, 100 mM glycine, pH 7.3, 10% glycerol
Preparation:	Recombinant protein was captured through anti-DDK affinity column followed by conventional chromatography steps.
Note:	For testing in cell culture applications, please filter before use. Note that you may experience some loss of protein during the filtration process.
Storage:	Store at -80°C.
Stability:	Stable for 12 months from the date of receipt of the product under proper storage and handling conditions. Avoid repeated freeze-thaw cycles.



[View online »](#)

RefSeq: [NP_000763](#)

Locus ID: 1562

UniProt ID: [P33260](#), [Q7Z348](#)

RefSeq Size: 1995

Cytogenetics: 10q23.33

RefSeq ORF: 1470

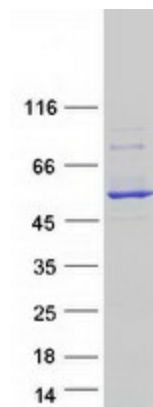
Synonyms: CPCI; CYP2C; CYP2C17; P450-6B/29C; P450IIC17

Summary: This gene encodes a member of the cytochrome P450 superfamily of enzymes. The cytochrome P450 proteins are monooxygenases which catalyze many reactions involved in drug metabolism and synthesis of cholesterol, steroids and other lipids. This protein localizes to the endoplasmic reticulum but its specific substrate has not yet been determined. The gene is located within a cluster of cytochrome P450 genes on chromosome 10q24. An additional gene, CYP2C17, was once thought to exist; however, CYP2C17 is now considered an artefact based on a chimera of CYP2C18 and CYP2C19. Alternatively spliced transcript variants encoding different isoforms have been found for this gene. [provided by RefSeq, Jul 2008]

Protein Families: Druggable Genome, P450

Protein Pathways: Arachidonic acid metabolism, Drug metabolism - cytochrome P450, Linoleic acid metabolism, Metabolic pathways, Metabolism of xenobiotics by cytochrome P450, Retinol metabolism

Product images:



Coomassie blue staining of purified CYP2C18 protein (Cat# [TP310231]). The protein was produced from HEK293T cells transfected with CYP2C18 cDNA clone (Cat# [RC210231]) using MegaTran 2.0 (Cat# [TT210002]).