

## Product datasheet for **TP310229L**

### DEFA6 (NM\_001926) Human Recombinant Protein

#### Product data:

Product Type:	Recombinant Proteins
Description:	Recombinant protein of human defensin, alpha 6, Paneth cell-specific (DEFA6), 1 mg
Species:	Human
Expression Host:	HEK293T
Expression cDNA Clone or AA Sequence:	>RC210229 protein sequence <b>Red</b> =Cloning site <b>Green</b> =Tags(s)
	MRTLILTAVLLVALQAKAEPLQAEDDPLQAKAYEADAQEQRGANDQDFAVSFAEDASSSLRALGSTRAF TCHCRRSCYSTEYSYGTCTVMGINHRFCCL
	<b>TR</b> TRPLE <b>QKLISEEDLA</b> ANDILDYKDDDDKV
Tag:	C-Myc/DDK
Predicted MW:	8.9 kDa
Concentration:	>0.05 µg/µL as determined by microplate BCA method
Purity:	> 80% as determined by SDS-PAGE and Coomassie blue staining
Buffer:	25 mM Tris-HCl, 100 mM glycine, pH 7.3, 10% glycerol
Preparation:	Recombinant protein was captured through anti-DDK affinity column followed by conventional chromatography steps.
Note:	For testing in cell culture applications, please filter before use. Note that you may experience some loss of protein during the filtration process.
Storage:	Store at -80°C.
Stability:	Stable for 12 months from the date of receipt of the product under proper storage and handling conditions. Avoid repeated freeze-thaw cycles.
RefSeq:	<a href="#">NP_001917</a>
Locus ID:	1671
UniProt ID:	<a href="#">Q01524</a>
RefSeq Size:	479
Cytogenetics:	8p23.1



[View online »](#)

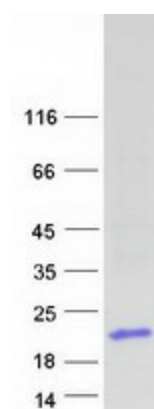
**RefSeq ORF:** 300

**Synonyms:** DEF6; HD-6

**Summary:** Defensins are a family of antimicrobial and cytotoxic peptides thought to be involved in host defense. They are abundant in the granules of neutrophils and also found in the epithelia of mucosal surfaces such as those of the intestine, respiratory tract, urinary tract, and vagina. Members of the defensin family are highly similar in protein sequence and distinguished by a conserved cysteine motif. Several alpha defensin genes appear to be clustered on chromosome 8. The protein encoded by this gene, defensin, alpha 6, is highly expressed in the secretory granules of Paneth cells of the small intestine, and likely plays a role in host defense of human bowel. [provided by RefSeq, Oct 2014]

**Protein Families:** Secreted Protein

### Product images:



Coomassie blue staining of purified DEFA6 protein (Cat# [TP310229]). The protein was produced from HEK293T cells transfected with DEFA6 cDNA clone (Cat# [RC210229]) using MegaTran 2.0 (Cat# [TT210002]).