

Product datasheet for **TP310222L**

Gastrin (GAST) (NM_000805) Human Recombinant Protein

Product data:

Product Type: Recombinant Proteins

Description: Recombinant protein of human gastrin (GAST), 1 mg

Species: Human

Expression Host: HEK293T

Expression cDNA Clone
or AA Sequence: >RC210222 protein sequence
Red=Cloning site **Green**=Tags(s)

MQRLCVYVLIFALALAAFSEASWKPRSQQPDAPLGTGANRDLELPWLEQQGPASHHRRQLGPPQPPHLVA
DPSKKQGPWLEEEEEAYGWMDFGRRSAEDEN

TRTRPLEQKLISEEDLAANDILDYKDDDDKV

Tag: C-Myc/DDK

Predicted MW: 9.2 kDa

Concentration: >0.05 µg/µL as determined by microplate BCA method

Purity: > 80% as determined by SDS-PAGE and Coomassie blue staining

Buffer: 25 mM Tris-HCl, 100 mM glycine, pH 7.3, 10% glycerol

Preparation: Recombinant protein was captured through anti-DDK affinity column followed by conventional chromatography steps.

Note: For testing in cell culture applications, please filter before use. Note that you may experience some loss of protein during the filtration process.

Storage: Store at -80°C.

Stability: Stable for 12 months from the date of receipt of the product under proper storage and handling conditions. Avoid repeated freeze-thaw cycles.

RefSeq: [NP_000796](#)

Locus ID: 2520

UniProt ID: [P01350](#), [A0A0E3VY36](#)

RefSeq Size: 475

Cytogenetics: 17q21.2



[View online »](#)

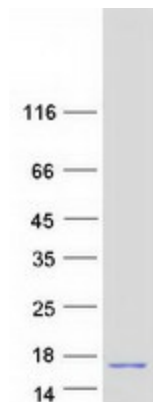
RefSeq ORF: 303

Synonyms: GAS

Summary: Gastrin is a hormone whose main function is to stimulate secretion of hydrochloric acid by the gastric mucosa, which results in gastrin formation inhibition. This hormone also acts as a mitogenic factor for gastrointestinal epithelial cells. Gastrin has two biologically active peptide forms, G34 and G17. [provided by RefSeq, Jul 2008]

Protein Families: Druggable Genome, Secreted Protein

Product images:



Coomassie blue staining of purified GAST protein (Cat# [TP310222]). The protein was produced from HEK293T cells transfected with GAST cDNA clone (Cat# [RC210222]) using MegaTran 2.0 (Cat# [TT210002]).