

## Product datasheet for **TP310215L**

### **PDE6H (NM\_006205) Human Recombinant Protein**

#### **Product data:**

<b>Product Type:</b>	Recombinant Proteins
<b>Description:</b>	Recombinant protein of human phosphodiesterase 6H, cGMP-specific, cone, gamma (PDE6H), 1 mg
<b>Species:</b>	Human
<b>Expression Host:</b>	HEK293T
<b>Expression cDNA Clone or AA Sequence:</b>	>RC210215 protein sequence <b>Red</b> =Cloning site <b>Green</b> =Tags(s)  MSDNNTTLPAPASNQGPTTPRKGPFPKFKQRQTRQFKSKPPKKGKVGFGDDIPGMEGLGTDITVICPWEAFS HLELHELAQFGII  <b>TRTRPLEQKLISEEDLAANDILDYKDDDDKV</b>
<b>Tag:</b>	C-Myc/DDK
<b>Predicted MW:</b>	8.9 kDa
<b>Concentration:</b>	>0.05 µg/µL as determined by microplate BCA method
<b>Purity:</b>	> 80% as determined by SDS-PAGE and Coomassie blue staining
<b>Buffer:</b>	25 mM Tris-HCl, 100 mM glycine, pH 7.3, 10% glycerol
<b>Preparation:</b>	Recombinant protein was captured through anti-DDK affinity column followed by conventional chromatography steps.
<b>Note:</b>	For testing in cell culture applications, please filter before use. Note that you may experience some loss of protein during the filtration process.
<b>Storage:</b>	Store at -80°C.
<b>Stability:</b>	Stable for 12 months from the date of receipt of the product under proper storage and handling conditions. Avoid repeated freeze-thaw cycles.
<b>RefSeq:</b>	<a href="#">NP_006196</a>
<b>Locus ID:</b>	5149
<b>UniProt ID:</b>	<a href="#">Q13956</a>
<b>RefSeq Size:</b>	763



[View online »](#)

Cytogenetics: 12p12.3

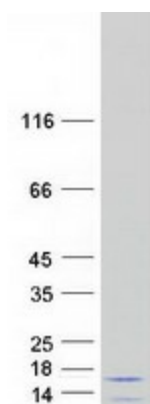
RefSeq ORF: 249

Synonyms: ACHM6; RCD3

**Summary:** This gene encodes the inhibitory (or gamma) subunit of the cone-specific cGMP phosphodiesterase, which is a tetramer composed of two catalytic chains (alpha and beta), and two inhibitory chains (gamma). It is specifically expressed in the retina, and is involved in the transmission and amplification of the visual signal. Mutations in this gene are associated with retinal cone dystrophy type 3A (RCD3A). [provided by RefSeq, Mar 2010]

**Protein Pathways:** Progesterone-mediated oocyte maturation, Purine metabolism

### Product images:



Coomassie blue staining of purified PDE6H protein (Cat# [TP310215]). The protein was produced from HEK293T cells transfected with PDE6H cDNA clone (Cat# [RC210215]) using MegaTran 2.0 (Cat# [TT210002]).