

Product datasheet for **TP310206**

FABP2 (NM_000134) Human Recombinant Protein

Product data:

Product Type:	Recombinant Proteins
Description:	Recombinant protein of human fatty acid binding protein 2, intestinal (FABP2), 20 µg
Species:	Human
Expression Host:	HEK293T
Expression cDNA Clone or AA Sequence:	>RC210206 protein sequence Red =Cloning site Green =Tags(s) MAFDSTWKVDRSENYDKFMEKMGVNIKRLAAHDNLKLTITQEGNKFTVKESSAFRNIEVVFELGVTFN YNLADGTELRGTWSLEGNKLGKFKRTDNGNELNTVREIIGDELVQTYVYEGVEAKRIFKDD TRTRPLEQKLISEEDLAANDILDYKDDDDKV
Tag:	C-Myc/DDK
Predicted MW:	15.1 kDa
Concentration:	>0.05 µg/µL as determined by microplate BCA method
Purity:	> 80% as determined by SDS-PAGE and Coomassie blue staining
Buffer:	25 mM Tris-HCl, 100 mM glycine, pH 7.3, 10% glycerol
Preparation:	Recombinant protein was captured through anti-DDK affinity column followed by conventional chromatography steps.
Note:	For testing in cell culture applications, please filter before use. Note that you may experience some loss of protein during the filtration process.
Storage:	Store at -80°C.
Stability:	Stable for 12 months from the date of receipt of the product under proper storage and handling conditions. Avoid repeated freeze-thaw cycles.
RefSeq:	NP_000125
Locus ID:	2169
UniProt ID:	P12104
RefSeq Size:	2271
Cytogenetics:	4q26



[View online »](#)

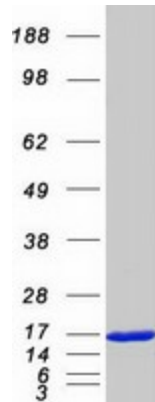
RefSeq ORF: 396

Synonyms: FABPI; I-FABP

Summary: The protein encoded by this gene is an intracellular fatty acid-binding protein that participates in the uptake, intracellular metabolism, and transport of long-chain fatty acids. The encoded protein is also involved in the modulation of cell growth and proliferation. This protein binds saturated long-chain fatty acids with high affinity, and may act as a lipid sensor to maintain energy homeostasis. [provided by RefSeq, Aug 2017]

Protein Pathways: PPAR signaling pathway

Product images:



Coomassie blue staining of purified FABP2 protein (Cat# TP310206). The protein was produced from HEK293T cells transfected with FABP2 cDNA clone (Cat# [RC210206]) using MegaTran 2.0 (Cat# [TT210002]).