

Product datasheet for **TP310191M**

CD2AP (NM_012120) Human Recombinant Protein

Product data:

Product Type: Recombinant Proteins
Description: Purified recombinant protein of Homo sapiens CD2-associated protein (CD2AP), 100 µg
Species: Human
Expression Host: HEK293T
Expression cDNA Clone or AA Sequence: >RC210191 representing NM_012120
Red=Cloning site Green=Tags(s)

MVDYIVEYDYDAVHDELIRVGEIIRNVKKLQEEGWLEGELNGRRGMFPDNFVKEIKRETEFKDDSLPI
 KRERHGNVASLVQRISTYGLPAGGIQPHQPQTKNIKKKTKKRQCKVLFYIPQNEDELELKVGDIIIDINEE
 VEEGWWSGTLNKLGLFPSNFVKELEVTDGGETHEAQDDSETVLAGPTSPIPSLGNVSETASGSVTQPKK
 IRGIGFGDIFKEGSVKLRTRTSSSETEEKPEKPLILQSLGPKTQSVEITKTDTEGKIKAKEYCRTLFAFAY
 EGTNEDELTFKEGEIHLISKETGEAGWWRGELNGKEGVFPDNFAVQINELDKDFPKPKPPPPAKAPAP
 KPELIAAEKKYFSLKPEEKDEKSTLEQKPSKPAAPQVPPKKPTPPTKASNLLRSSGTVYPKRPEKPVPPP
 PPIAKINGEVSSISSKFETEPVSKLKLDSQLPLRPKSVDFDSLTVRTSKETDVVNFDDIASSENLLHLT
 ANRPKMPGRRLPGRFNGGHSPTHSPKILKLPKEEDSANLKPSELKKDTCYSPKPSVYLSTPSSASKANT
 TAFLTPLKAKVETDDVKKNSLDELRAQIIELLCIVEALKKDHGKELEKLRKDLEEEKTMRSNLEMEIE
 KLKKAVLSS

TRTRPLEQKLISEEDLAANDILDYKDDDDDKV

Tag: C-Myc/DDK
Predicted MW: 71.3 kDa
Concentration: >0.05 µg/µL as determined by microplate BCA method
Purity: > 80% as determined by SDS-PAGE and Coomassie blue staining
Buffer: 25 mM Tris-HCl, 100 mM glycine, pH 7.3, 10% glycerol
Preparation: Recombinant protein was captured through anti-DDK affinity column followed by conventional chromatography steps.
Note: For testing in cell culture applications, please filter before use. Note that you may experience some loss of protein during the filtration process.
Storage: Store at -80°C.



[View online »](#)

Stability: Stable for 12 months from the date of receipt of the product under proper storage and handling conditions. Avoid repeated freeze-thaw cycles.

RefSeq: [NP_036252](#)

Locus ID: 23607

UniProt ID: [Q9Y5K6](#)

RefSeq Size: 5425

Cytogenetics: 6p12.3

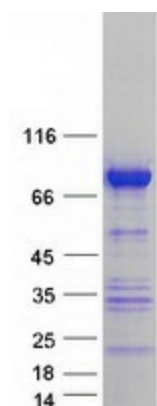
RefSeq ORF: 1917

Synonyms: CMS

Summary: This gene encodes a scaffolding molecule that regulates the actin cytoskeleton. The protein directly interacts with filamentous actin and a variety of cell membrane proteins through multiple actin binding sites, SH3 domains, and a proline-rich region containing binding sites for SH3 domains. The cytoplasmic protein localizes to membrane ruffles, lipid rafts, and the leading edges of cells. It is implicated in dynamic actin remodeling and membrane trafficking that occurs during receptor endocytosis and cytokinesis. Haploinsufficiency of this gene is implicated in susceptibility to glomerular disease. [provided by RefSeq, Jul 2008]

Protein Families: Druggable Genome

Product images:



Coomassie blue staining of purified CD2AP protein (Cat# [TP310191]). The protein was produced from HEK293T cells transfected with CD2AP cDNA clone (Cat# [RC210191]) using MegaTran 2.0 (Cat# [TT210002]).