

Product datasheet for **TP310187**

Serotonin transporter (SLC6A4) (NM_001045) Human Recombinant Protein

Product data:

Product Type:	Recombinant Proteins
Description:	Purified recombinant protein of Homo sapiens solute carrier family 6 (neurotransmitter transporter, serotonin), member 4 (SLC6A4), 20 µg
Species:	Human
Expression Host:	HEK293T
Expression cDNA Clone or AA Sequence:	>RC210187 representing NM_001045 Red =Cloning site Green =Tags(s)

METTPLNSQKQLSACEDGEDCQENGLVQKVPTPGDKVESGQISNGYSAVPSPGAGDDTRHSIPATTTTL
VAELHQGERETWGKKVDFLLSVIGYAVDLGNVWRFPYICYQNGGGAFLPYTIMAIFGGIPLFYMELALG
QYHRNGCISWRKICPIFKGIGYAICIIAFYIASYYNTIMAWALYLISSFTDQLPWTSCKNSWNTGNCT
NYFSEDNITWTLHSTSPAEFYTRHVLQIHRSKGLQDLGGISWQLALCIMLIFTVIYFSIWKGVKTSGBKV
VWVTATFPYIILSVLLVRGATLPGAWRGVLFYLPKNWQKLETTGVWIDAAAQIFFSLGPGFGVLLAFASY
NKFNNNCYQDALVTSVNCMTSFVSGFVIFTVLGYMAEMRNEDVSEVAKDAGPSLLFITYAEAIANMPAS
TFFAIIFLMLITLGLDSTFAGLEGVITAVLDEFPHWAKRRERFVLAVITCFFGSLVTLTFGGAYVVK
LLEEYATGPAVLTVLIEAVAVSWFYGITQFCRDVKEMLGFSPGWFWRICWVAISPLFLLFIICSFLMSP
PQLRLFQYNYPYWSIILGYCIGTSSFICIPTYIAYRLIITPGTFKERIISITPETPTEIPCGDIRLNAV

TRTRPLEQKLISEEDLAANDILDYKDDDDKV

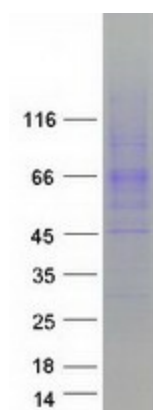
Tag:	C-Myc/DDK
Predicted MW:	70.1 kDa
Concentration:	>0.05 µg/µL as determined by microplate BCA method
Purity:	> 80% as determined by SDS-PAGE and Coomassie blue staining
Buffer:	25 mM Tris-HCl, 100 mM glycine, pH 7.3, 10% glycerol
Bioactivity:	WB standard (PMID: 26297601)
Preparation:	Recombinant protein was captured through anti-DDK affinity column followed by conventional chromatography steps.
Note:	For testing in cell culture applications, please filter before use. Note that you may experience some loss of protein during the filtration process.



[View online »](#)

Storage:	Store at -80°C.
Stability:	Stable for 12 months from the date of receipt of the product under proper storage and handling conditions. Avoid repeated freeze-thaw cycles.
RefSeq:	NP_001036
Locus ID:	6532
UniProt ID:	P31645 , B2R7Y7
RefSeq Size:	2756
Cytogenetics:	17q11.2
RefSeq ORF:	1890
Synonyms:	5-HTT; 5-HTTLPR; 5HTT; hSERT; HTT; OCD1; SERT; SERT1
Summary:	This gene encodes an integral membrane protein that transports the neurotransmitter serotonin from synaptic spaces into presynaptic neurons. The encoded protein terminates the action of serotonin and recycles it in a sodium-dependent manner. This protein is a target of psychomotor stimulants, such as amphetamines and cocaine, and is a member of the sodium:neurotransmitter symporter family. A repeat length polymorphism in the promoter of this gene has been shown to affect the rate of serotonin uptake. There have been conflicting results in the literature about the possible effect, if any, that this polymorphism may play in behavior and depression. [provided by RefSeq, May 2019]
Protein Families:	Druggable Genome, Transmembrane

Product images:



Coomassie blue staining of purified SLC6A4 protein (Cat# TP310187). The protein was produced from HEK293T cells transfected with SLC6A4 cDNA clone (Cat# [RC210187]) using MegaTran 2.0 (Cat# [TT210002]).