

Product datasheet for TP310166M

HRG (NM_000412) Human Recombinant Protein

Product data:

Product Type: Recombinant Proteins

Description: Recombinant protein of human histidine-rich glycoprotein (HRG), 100 µg

Species: Human

Expression Host: HEK293T

Expression cDNA Clone or AA Sequence: >RC210166 protein sequence
Red=Cloning site Green=Tags(s)

MKALIAALLLITLQYSCAVSPTDCSAVEPEAEKALDLINKRRRDGYLFQLLRIADAHLD RVENTTVYYLV
LDVQESDCSVLSRKYWNDCEPPDSRRPSEIVIGQCKVIATRHSQDLRVIDFNCTTSSVSSALANTKD
SPVLIDFFEDTERYRQANKALEKYKEENDDFASFRVDRIERVARVRGGEGTGYFVDFSVRNCPRHHFPR
HPNVFGFCRADLFYDVEALDLESPKNLVINCEVFDPQEHENINGVPPHLGHPFHWGGHERSSTTKPPFKP
HGSRDHHHPHKPHEHGPPPPDERDHSHPPLPQGPPLLMSCSSCQHATFGTNGAQRHSHNNSSDLH
PHKHSHEQHPHGHHHPAHHPHEHDTHRQHPHGHHHPHGHHHPHGHHHPHGHHHPHCHDFQDYGPCDPP
PHNQGHCCGHGPPPGHLRRRGPKGPRPFHCRQIGSVYRLPPLRKGEVLPPEANFSPFLPHHKHPLK
PDNQPFQSVSESCPGKFKSGFPQVSMFFHTFPK

TRTRPLEQKLISEEDLAANDILDYKDDDDKV

Tag: C-Myc/DDK

Predicted MW: 57.6 kDa

Concentration: >0.05 µg/µL as determined by microplate BCA method

Purity: > 80% as determined by SDS-PAGE and Coomassie blue staining

Buffer: 25 mM Tris-HCl, 100 mM glycine, pH 7.3, 10% glycerol

Preparation: Recombinant protein was captured through anti-DDK affinity column followed by conventional chromatography steps.

Note: For testing in cell culture applications, please filter before use. Note that you may experience some loss of protein during the filtration process.

Storage: Store at -80°C.



[View online »](#)

Stability: Stable for 12 months from the date of receipt of the product under proper storage and handling conditions. Avoid repeated freeze-thaw cycles.

RefSeq: [NP_000403](#)

Locus ID: 3273

UniProt ID: [P04196](#)

RefSeq Size: 2015

Cytogenetics: 3q27.3

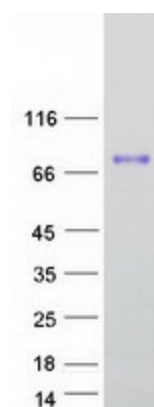
RefSeq ORF: 1575

Synonyms: HPRG; HRGP; THPH11

Summary: This histidine-rich glycoprotein contains two cystatin-like domains and is located in plasma and platelets. The physiological function has not been determined but it is known that the protein binds heme, dyes and divalent metal ions. The encoded protein also has a peptide that displays antimicrobial activity against *C. albicans*, *E. coli*, *S. aureus*, *P. aeruginosa*, and *E. faecalis*. It can inhibit rosette formation and interacts with heparin, thrombospondin and plasminogen. Two of the protein's effects, the inhibition of fibrinolysis and the reduction of inhibition of coagulation, indicate a potential prothrombotic effect. Mutations in this gene lead to thrombophilia due to abnormal histidine-rich glycoprotein levels. [provided by RefSeq, Nov 2014]

Protein Families: Secreted Protein

Product images:



Coomassie blue staining of purified HRG protein (Cat# [TP310166]). The protein was produced from HEK293T cells transfected with HRG cDNA clone (Cat# [RC210166]) using MegaTran 2.0 (Cat# [TT210002]).