

## Product datasheet for TP310166

### HRG (NM\_000412) Human Recombinant Protein

#### Product data:

**Product Type:** Recombinant Proteins

**Description:** Recombinant protein of human histidine-rich glycoprotein (HRG), 20 µg

**Species:** Human

**Expression Host:** HEK293T

**Expression cDNA Clone or AA Sequence:** >RC210166 protein sequence  
Red=Cloning site Green=Tags(s)

MKALIAALLLITLQYSCAVSPTDCSAVEPEAEKALDLINKRRRDGYLFQLLRIADAHLDRVENTTVYYLV  
LDVQESDCSVLSRKYWNDCEPPDSRRPSEIVIGQCKVIATRSHESQDLRVIDFNCTTSSVSSALANTKD  
SPVLIDFFEDTERYRQANKALEKYKEENDDFASFRVDRIERVARVRGGEGTGYFVDFSVRNCPRHHFPR  
HPNVFGFCRADLFYDVEALDLESPKNLVINCEVFDPQEHENINGVPPHLGHPFHWGGHERSSTTKPPFKP  
HGSRDHHHPHKPHEHGPPPPDERDHSHPPLPQGPPLLMSCSSCQHATFGTNGAQRHSHNNSSDLH  
PHKHSHEQHPHGHHHPAHHPHEHDTHRQHPHGHHHPHGHHHPHGHHHPHGHHHPHCHDFQDYGPCDPP  
PHNQGHCCGHGPPPGHLRRRGPKGPRPFHCRQIGSVYRLPPLRKGEVLPPEANFSPFLPHHKHPLK  
PDNQPFQSVSESCPGKFKSGFPQVSMFFHTFPK

TRTRPLEQKLISEEDLAANDILDYKDDDDKV

**Tag:** C-Myc/DDK

**Predicted MW:** 57.6 kDa

**Concentration:** >0.05 µg/µL as determined by microplate BCA method

**Purity:** > 80% as determined by SDS-PAGE and Coomassie blue staining

**Buffer:** 25 mM Tris-HCl, 100 mM glycine, pH 7.3, 10% glycerol

**Preparation:** Recombinant protein was captured through anti-DDK affinity column followed by conventional chromatography steps.

**Note:** For testing in cell culture applications, please filter before use. Note that you may experience some loss of protein during the filtration process.

**Storage:** Store at -80°C.



[View online »](#)

**Stability:** Stable for 12 months from the date of receipt of the product under proper storage and handling conditions. Avoid repeated freeze-thaw cycles.

**RefSeq:** [NP\\_000403](#)

**Locus ID:** 3273

**UniProt ID:** [P04196](#)

**RefSeq Size:** 2015

**Cytogenetics:** 3q27.3

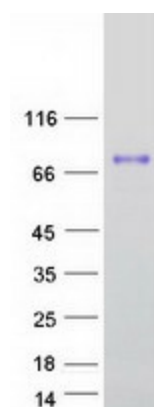
**RefSeq ORF:** 1575

**Synonyms:** HPRG; HRGP; THPH11

**Summary:** This histidine-rich glycoprotein contains two cystatin-like domains and is located in plasma and platelets. The physiological function has not been determined but it is known that the protein binds heme, dyes and divalent metal ions. The encoded protein also has a peptide that displays antimicrobial activity against *C. albicans*, *E. coli*, *S. aureus*, *P. aeruginosa*, and *E. faecalis*. It can inhibit rosette formation and interacts with heparin, thrombospondin and plasminogen. Two of the protein's effects, the inhibition of fibrinolysis and the reduction of inhibition of coagulation, indicate a potential prothrombotic effect. Mutations in this gene lead to thrombophilia due to abnormal histidine-rich glycoprotein levels. [provided by RefSeq, Nov 2014]

**Protein Families:** Secreted Protein

## Product images:



Coomassie blue staining of purified HRG protein (Cat# TP310166). The protein was produced from HEK293T cells transfected with HRG cDNA clone (Cat# [RC210166]) using MegaTran 2.0 (Cat# [TT210002]).