

Product datasheet for **TP310163M**

S1PR2 (NM_004230) Human Recombinant Protein

Product data:

Product Type:	Recombinant Proteins
Description:	Recombinant protein of human sphingosine-1-phosphate receptor 2 (S1PR2), 100 µg
Species:	Human
Expression Host:	HEK293T
Expression cDNA Clone or AA Sequence:	>RC210163 protein sequence Red =Cloning site Green =Tags(s)
	<p>MGSLYSEYLNPNKVQEYHNYTKETLETQETTSRQVASAFIVILCCAIVENLLVLIAVARNKSFHSAMYL FLGNLAASDLLAGVAFVANTLLSGSVTLRLTPVQWFAREGSAFITLSASVFSLLAIAIERHVAIAKVKLY GSDKSCRMILLIGASWLISLVLGGPLILGWNCLGHLEACSTVLPYAKHYVLCVVTIFSIILLAIVALYV RIYCVVRSSHADMAAPQTLALLKTVTIVLGVFIVCWLPAFSILLLDYACPVHSCPILYKAHYFFAVSTLN SLLNPVIYTWRSDLRREVLRLPQCWRPGVGVQRRRRGGTPGHLLPLRSSSSLERGMHMPTSPTFLEGN TVV</p> <p>TRTRPLEQKLISEEDLAANDILDYKDDDDKV</p>
Tag:	C-Myc/DDK
Predicted MW:	38.7 kDa
Concentration:	>0.05 µg/µL as determined by microplate BCA method
Purity:	> 80% as determined by SDS-PAGE and Coomassie blue staining
Buffer:	25 mM Tris-HCl, 100 mM glycine, pH 7.3, 10% glycerol
Preparation:	Recombinant protein was captured through anti-DDK affinity column followed by conventional chromatography steps.
Note:	For testing in cell culture applications, please filter before use. Note that you may experience some loss of protein during the filtration process.
Storage:	Store at -80°C.
Stability:	Stable for 12 months from the date of receipt of the product under proper storage and handling conditions. Avoid repeated freeze-thaw cycles.
RefSeq:	<u>NP_004221</u>
Locus ID:	9294



[View online »](#)

UniProt ID: [O95136](#), [A0A024R7B2](#)

RefSeq Size: 3589

Cytogenetics: 19p13.2

RefSeq ORF: 1061

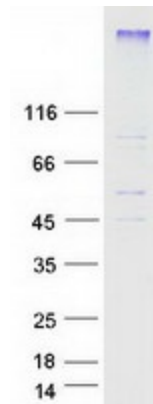
Synonyms: AGR16; DFNB68; EDG-5; EDG5; Gpcr13; H218; LPB2; S1P2

Summary: This gene encodes a member of the G protein-coupled receptors, as well as the EDG family of proteins. The encoded protein is a receptor for sphingosine 1-phosphate, which participates in cell proliferation, survival, and transcriptional activation. Defects in this gene have been associated with congenital profound deafness. [provided by RefSeq, Mar 2016]

Protein Families: Druggable Genome, GPCR, Transmembrane

Protein Pathways: Neuroactive ligand-receptor interaction

Product images:



Coomassie blue staining of purified S1PR2 protein (Cat# [TP310163]). The protein was produced from HEK293T cells transfected with S1PR2 cDNA clone (Cat# [RC210163]) using MegaTran 2.0 (Cat# [TT210002]).