

## Product datasheet for **TP310143M**

### Mannan Binding Lectin (MBL2) (NM\_000242) Human Recombinant Protein

#### Product data:

Product Type:	Recombinant Proteins
Description:	Recombinant protein of human mannose-binding lectin (protein C) 2, soluble (opsonic defect) (MBL2), 100 µg
Species:	Human
Expression Host:	HEK293T
Expression cDNA Clone or AA Sequence:	>RC210143 protein sequence <b>Red</b> =Cloning site <b>Green</b> =Tags(s)

MSLFPSLPLLLLSMVAASYSETVTCEDAQKTCPAVIACSSPGINGFPGKDRDGTGKEKGEPGQGLRGLQ  
GPPGKLGPPGNPGSPGPKGQKGDGPKSPDGDSSLAASERKALQTEMARIKKWLTFSLGKQVGNKFFL  
TNGEIMTFEKVKALCVKFQASVATPRNAAENGAIQNLIKEEAFLGITDEKTEGQFVDLTGNRLTYTNWNE  
GEPNAGSDEDCVLLKNGQWNDVPCSTSHLAVCFPI

**TRTRPLEQKLISEEDLAANDILDYKDDDDKV**

Tag:	C-Myc/DDK
Predicted MW:	24 kDa
Concentration:	>0.05 µg/µL as determined by microplate BCA method
Purity:	> 80% as determined by SDS-PAGE and Coomassie blue staining
Buffer:	25 mM Tris-HCl, 100 mM glycine, pH 7.3, 10% glycerol
Preparation:	Recombinant protein was captured through anti-DDK affinity column followed by conventional chromatography steps.
Note:	For testing in cell culture applications, please filter before use. Note that you may experience some loss of protein during the filtration process.
Storage:	Store at -80°C.
Stability:	Stable for 12 months from the date of receipt of the product under proper storage and handling conditions. Avoid repeated freeze-thaw cycles.
RefSeq:	<u><a href="#">NP_000233</a></u>
Locus ID:	4153



[View online »](#)

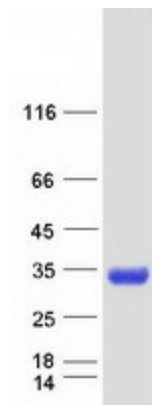
UniProt ID: [P11226](#)  
RefSeq Size: 3569  
Cytogenetics: 10q21.1  
RefSeq ORF: 744  
Synonyms: COLEC1; HSMBPC; MBL; MBL2D; MBP; MBP-C; MBP1; MBPD

**Summary:** This gene encodes the soluble mannose-binding lectin or mannose-binding protein found in serum. The protein encoded belongs to the collectin family and is an important element in the innate immune system. The protein recognizes and binds to mannose and N-acetylglucosamine on many microorganisms, including bacteria, yeast, and viruses including influenza virus, HIV and SARS-CoV. This binding activates the classical complement pathway. Deficiencies of this gene have been associated with susceptibility to autoimmune and infectious diseases. [provided by RefSeq, Jun 2020]

**Protein Families:** Druggable Genome

**Protein Pathways:** Complement and coagulation cascades

### Product images:



Coomassie blue staining of purified MBL2 protein (Cat# [TP310143]). The protein was produced from HEK293T cells transfected with MBL2 cDNA clone (Cat# [RC210143]) using MegaTran 2.0 (Cat# [TT210002]).