

## Product datasheet for **TP310126M**

### **CELA2B (NM\_015849) Human Recombinant Protein**

#### **Product data:**

Product Type:	Recombinant Proteins
Description:	Recombinant protein of human elastase 2B (ELA2B), 100 µg
Species:	Human
Expression Host:	HEK293T
Expression cDNA Clone or AA Sequence:	>RC210126 protein sequence <b>Red</b> =Cloning site <b>Green</b> =Tags(s)

MIRLLLLSTLVAGALSCGVSTYAPDMSRMLGGEEARPNSWPWQVSLQYSSNGQWYHTCGGSLIANSWVLT  
AAHCISSSGIYRVMLGQHNLVAESGLAVSVSKIVVHKDWNVDQVSKGNDIALLKLANPVSLTDKIQLA  
CLPPAGTILPNNYPCYVTGWGRLQTNGALPDDLKQGRLLVDYATCSSSGWWGSTVKTNMICAGGDGVIC  
TCNGDSGGPLNCQASDGRWEVHGIGSLTSVLGCNYYYKPSIFTRVSNYNDWINSVIANN

**TRTRPLEQKLISEEDLAANDILDYKDDDDKV**

Tag:	C-Myc/DDK
Predicted MW:	27.1 kDa
Concentration:	>0.05 µg/µL as determined by microplate BCA method
Purity:	> 80% as determined by SDS-PAGE and Coomassie blue staining
Buffer:	25 mM Tris-HCl, 100 mM glycine, pH 7.3, 10% glycerol
Preparation:	Recombinant protein was captured through anti-DDK affinity column followed by conventional chromatography steps.
Note:	For testing in cell culture applications, please filter before use. Note that you may experience some loss of protein during the filtration process.
Storage:	Store at -80°C.
Stability:	Stable for 12 months from the date of receipt of the product under proper storage and handling conditions. Avoid repeated freeze-thaw cycles.
RefSeq:	<a href="#">NP_056933</a>
Locus ID:	51032
UniProt ID:	<a href="#">P08218</a> , <a href="#">Q6ISP9</a>



[View online »](#)

RefSeq Size: 941

Cytogenetics: 1p36.21

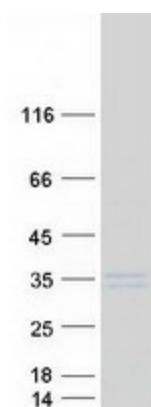
RefSeq ORF: 807

Synonyms: ELA2B

**Summary:** Elastases form a subfamily of serine proteases that hydrolyze many proteins in addition to elastin. Humans have six elastase genes which encode the structurally similar proteins elastase 1, 2, 2A, 2B, 3A, and 3B. Like most of the human elastases, elastase 2B is secreted from the pancreas as a zymogen. In other species, elastase 2B has been shown to preferentially cleave proteins after leucine, methionine, and phenylalanine residues. [provided by RefSeq, Jul 2008]

**Protein Families:** Druggable Genome, Secreted Protein

### Product images:



Coomassie blue staining of purified CELA2B protein (Cat# [TP310126]). The protein was produced from HEK293T cells transfected with CELA2B cDNA clone (Cat# [RC210126]) using MegaTran 2.0 (Cat# [TT210002]).