

Product datasheet for **TP310121L**

PAEP (NM_002571) Human Recombinant Protein

Product data:

Product Type:	Recombinant Proteins
Description:	Recombinant protein of human progestagen-associated endometrial protein (PAEP), transcript variant 2, 1 mg
Species:	Human
Expression Host:	HEK293T
Expression cDNA Clone or AA Sequence:	>RC210121 protein sequence Red =Cloning site Green =Tags(s)
	 MLCLLLTLGVALVCGVPAMDIPQTKQDLELPKLAGTWHSMAMATNNISLMATLKAPLRVHITSLLPTPED NLEIVLHRWENNSCVEKKVLGEKTENPKKFKINYTVANEATLLDTDYDNFLCLQDTTTTPIQSMQCQYL ARVLVEDDEIMQGFIRAFRPLPRHLWYLLDLKQMEEPCRF TRTRPLEQKLISEEDLAANDILDYKDDDDKV
Tag:	C-Myc/DDK
Predicted MW:	18.8 kDa
Concentration:	>0.05 µg/µL as determined by microplate BCA method
Purity:	> 80% as determined by SDS-PAGE and Coomassie blue staining
Buffer:	25 mM Tris-HCl, 100 mM glycine, pH 7.3, 10% glycerol
Preparation:	Recombinant protein was captured through anti-DDK affinity column followed by conventional chromatography steps.
Note:	For testing in cell culture applications, please filter before use. Note that you may experience some loss of protein during the filtration process.
Storage:	Store at -80°C.
Stability:	Stable for 12 months from the date of receipt of the product under proper storage and handling conditions. Avoid repeated freeze-thaw cycles.
RefSeq:	NP_002562
Locus ID:	5047
UniProt ID:	P09466 , A0A024R8D8 , B2R4F9



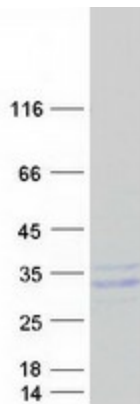
[View online »](#)

RefSeq Size:	828
Cytogenetics:	9q34.3
RefSeq ORF:	540
Synonyms:	GD; GdA; GdF; GdS; PAEG; PEP; PP14; ZIF-1

Summary: This gene is a member of the kernel lipocalin superfamily whose members share relatively low sequence similarity but have highly conserved exon/intron structure and three-dimensional protein folding. Most lipocalins are clustered on the long arm of chromosome 9. The encoded glycoprotein has been previously referred to as pregnancy-associated endometrial alpha-2-globulin, placental protein 14, and glycodelin, but has been officially named progesterone-associated endometrial protein. Three distinct forms, with identical protein backbones but different glycosylation profiles, are found in amniotic fluid, follicular fluid and seminal plasma of the reproductive system. These glycoproteins have distinct and essential roles in regulating a uterine environment suitable for pregnancy and in the timing and occurrence of the appropriate sequence of events in the fertilization process. Alternative splicing results in multiple transcript variants. [provided by RefSeq, Oct 2015]

Protein Families: Druggable Genome

Product images:



Coomassie blue staining of purified PAEP protein (Cat# [TP310121]). The protein was produced from HEK293T cells transfected with PAEP cDNA clone (Cat# [RC210121]) using MegaTran 2.0 (Cat# [TT210002]).