

Product datasheet for **TP310104L**

RELM beta (RETNLB) (NM_032579) Human Recombinant Protein

Product data:

Product Type:	Recombinant Proteins
Description:	Recombinant protein of human resistin like beta (RETNLB), 1 mg
Species:	Human
Expression Host:	HEK293T
Expression cDNA Clone or AA Sequence:	>RC210104 protein sequence Red =Cloning site Green =Tags(s)
	MGPSSCLLLIPLQLINPGSTQCSLDSVMDKKIKDVLNSLEYSPPSPISKKLSCASVKSQGRPSSCPAG MAVTGCACGYGCGSWDVQLETTCHCQCSVDWTTARCCHLT
	TRTRPLEQKLISEEDLAANDILDYKDDDDKV
Tag:	C-Myc/DDK
Predicted MW:	11.5 kDa
Concentration:	>0.05 µg/µL as determined by microplate BCA method
Purity:	> 80% as determined by SDS-PAGE and Coomassie blue staining
Buffer:	25 mM Tris-HCl, 100 mM glycine, pH 7.3, 10% glycerol
Preparation:	Recombinant protein was captured through anti-DDK affinity column followed by conventional chromatography steps.
Note:	For testing in cell culture applications, please filter before use. Note that you may experience some loss of protein during the filtration process.
Storage:	Store at -80°C.
Stability:	Stable for 12 months from the date of receipt of the product under proper storage and handling conditions. Avoid repeated freeze-thaw cycles.
RefSeq:	NP_115968
Locus ID:	84666
UniProt ID:	Q9BQ08
RefSeq Size:	594
Cytogenetics:	3q13.13



[View online »](#)

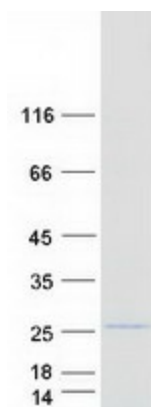
RefSeq ORF: 333

Synonyms: FIZZ1; FIZZ2; HXCP2; RELM-beta; RELMb; RELMbeta; XCP2

Summary: Probable hormone.[UniProtKB/Swiss-Prot Function]

Protein Families: Secreted Protein

Product images:



Coomassie blue staining of purified RETNLB protein (Cat# [TP310104]). The protein was produced from HEK293T cells transfected with RETNLB cDNA clone (Cat# [RC210104]) using MegaTran 2.0 (Cat# [TT210002]).