

## Product datasheet for **TP310095L**

### **RPL7L1 (NM\_198486) Human Recombinant Protein**

#### Product data:

Product Type:	Recombinant Proteins
Description:	Recombinant protein of human ribosomal protein L7-like 1 (RPL7L1), 1 mg
Species:	Human
Expression Host:	HEK293T
Expression cDNA Clone or AA Sequence:	>RC210095 protein sequence <b>Red</b> =Cloning site <b>Green</b> =Tags(s)
	<p>MAEQEQRKIPLVPENLLKKRKAYQALKATQAKQALLAKKEQKKGKGLRFKRLESFLHDSWRQKRDKVRLR            RLEVKPHALELPDKHSLAFVVRIDERIDGVSLVQRTIARLRLKKIFSGVFVKVTPQNLMRLRIVEPYVTW            GFPNLKSVRELILKRGQAKVKNKTIPLTDNTVIEEHLGKFGVICLEDLIHEIAFPKGKHFQEISWFLCPFH            LSVARHATKNRVGFLKEMGTPGYRGERINQLIRQLN</p> <p><b>TR</b>TRPLEQKLISEEDLAANDILDYKDDDDKV</p>
Tag:	C-Myc/DDK
Predicted MW:	28.5 kDa
Concentration:	>0.05 µg/µL as determined by microplate BCA method
Purity:	> 80% as determined by SDS-PAGE and Coomassie blue staining
Buffer:	25 mM Tris-HCl, 100 mM glycine, pH 7.3, 10% glycerol
Preparation:	Recombinant protein was captured through anti-DDK affinity column followed by conventional chromatography steps.
Note:	For testing in cell culture applications, please filter before use. Note that you may experience some loss of protein during the filtration process.
Storage:	Store at -80°C.
Stability:	Stable for 12 months from the date of receipt of the product under proper storage and handling conditions. Avoid repeated freeze-thaw cycles.
RefSeq:	<u><a href="#">NP_940888</a></u>
Locus ID:	285855
UniProt ID:	<u><a href="#">Q6DKI1</a></u>


[View online »](#)

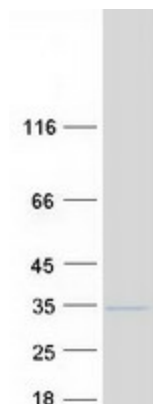
RefSeq Size: 1293

Cytogenetics: 6p21.1

RefSeq ORF: 738

Synonyms: dJ475N16.4

**Product images:**



Coomassie blue staining of purified RPL7L1 protein (Cat# [TP310095]). The protein was produced from HEK293T cells transfected with RPL7L1 cDNA clone (Cat# [RC210095]) using MegaTran 2.0 (Cat# [TT210002]).