

## Product datasheet for TP310095

### RPL7L1 (NM\_198486) Human Recombinant Protein

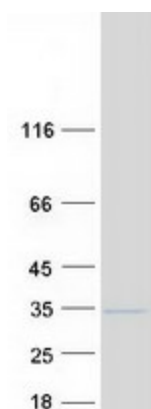
#### Product data:

|                                       |  |
|---------------------------------------|--|
| Product Type:                         | Recombinant Proteins   |
| Description:                          | Recombinant protein of human ribosomal protein L7-like 1 (RPL7L1), 20 µg   |
| Species:                              | Human  |
| Expression Host:                      | HEK293T  |
| Expression cDNA Clone or AA Sequence: | >RC210095 protein sequence<br><b>Red</b> =Cloning site <b>Green</b> =Tags(s)   |
|                                       | MAEQEQRKIPLVPENLLKKRKAYQALKATQAKQALLAKKEQKKGKGLRFKRLESFLHDSWRQKRDKVRLR<br>RLEVKPHALELPDKHSLAFVVRIDERIDGVSLLVQRTIARLRLKKIFSGVFKVTPQNLKMLRIVEPYVTW<br>GFPNLKSVRELILKRGQAKVKNKTIPLTDNTVIEEHLGKFGVICLEDLIHEIAFPGKHFQEISWFLCPFH<br>LSVARHATKNRVGFLKEMGTPGYRGERINQLIRQLN |
|                                       | <b>TR</b> TRPLEQKLISEEDLAANDILDYKDDDDKV  |
| Tag:                                  | C-Myc/DDK  |
| Predicted MW:                         | 28.5 kDa   |
| Concentration:                        | >0.05 µg/µL as determined by microplate BCA method   |
| Purity:                               | > 80% as determined by SDS-PAGE and Coomassie blue staining  |
| Buffer:                               | 25 mM Tris-HCl, 100 mM glycine, pH 7.3, 10% glycerol   |
| Preparation:                          | Recombinant protein was captured through anti-DDK affinity column followed by conventional chromatography steps.   |
| Note:                                 | For testing in cell culture applications, please filter before use. Note that you may experience some loss of protein during the filtration process.   |
| Storage:                              | Store at -80°C.  |
| Stability:                            | Stable for 12 months from the date of receipt of the product under proper storage and handling conditions. Avoid repeated freeze-thaw cycles.  |
| RefSeq:                               | <u><a href="#">NP_940888</a></u>   |
| Locus ID:                             | 285855   |
| UniProt ID:                           | <u><a href="#">Q6DKI1</a></u>  |



[View online »](#)

|               |            |
|---------------|------------|
| RefSeq Size:  | 1293       |
| Cytogenetics: | 6p21.1     |
| RefSeq ORF:   | 738        |
| Synonyms:     | dj475N16.4 |

**Product images:**

Coomassie blue staining of purified RPL7L1 protein (Cat# TP310095). The protein was produced from HEK293T cells transfected with RPL7L1 cDNA clone (Cat# [RC210095]) using MegaTran 2.0 (Cat# [TT210002]).