

Product datasheet for **TP310080M**

RISC (SCPEP1) (NM_021626) Human Recombinant Protein

Product data:

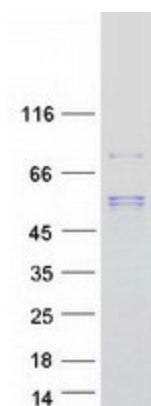
Product Type:	Recombinant Proteins
Description:	Recombinant protein of human serine carboxypeptidase 1 (SCPEP1), 100 µg
Species:	Human
Expression Host:	HEK293T
Expression cDNA Clone or AA Sequence:	>RC210080 protein sequence Red =Cloning site Green =Tags(s)
	<p>MELALRRSPVPRWLLLLPLLLGLNAGAVIDWPTEEGKEVWDYVTVRKDAYMFWWLYATNSCKNFSELPL VMWLQGGPGGSSTGFGNFEEIGPLDSDLKPRKTTWLQAASLLFVDNPVGTGFSYVNGSGAYAKDLAMVAS DMMVLLKTFFSCHKEFQTPFYIFSESYGGKMAAGIGLELYKAIQRGTIKCNFAGVALGDSWISPVDSVL SWGPLYSMSLLEDKGLAEVSKVAEQVLNAVNGLYREATELWGKAEMIEQNTDGVNFYNILTKSTPTS TMESSELEFTQSHLVCLCQRHVRHLQRDALSQLMNGPIRKKLKIIPEDQSWGQATNVFVNMEEDFMKPV SIVDELLEAGINVTYNGQLDLIVDTMGQEAWVRKLLKWPPELKFSQLKWKALYSDPKSLETSFAFKSYKN LAFYWILKAGHMVPSDQGDMAKMMRLVTQQE</p> <p>TRTRPLEQKLISEEDLAANDILDYKDDDDKV</p>
Tag:	C-Myc/DDK
Predicted MW:	47.9 kDa
Concentration:	>0.05 µg/µL as determined by microplate BCA method
Purity:	> 80% as determined by SDS-PAGE and Coomassie blue staining
Buffer:	25 mM Tris-HCl, 100 mM glycine, pH 7.3, 10% glycerol
Preparation:	Recombinant protein was captured through anti-DDK affinity column followed by conventional chromatography steps.
Note:	For testing in cell culture applications, please filter before use. Note that you may experience some loss of protein during the filtration process.
Storage:	Store at -80°C.
Stability:	Stable for 12 months from the date of receipt of the product under proper storage and handling conditions. Avoid repeated freeze-thaw cycles.
RefSeq:	<u>NP_067639</u>



[View online »](#)

Locus ID:	59342
UniProt ID:	Q9HB40 , Q9H2J9
RefSeq Size:	1952
Cytogenetics:	17q22
RefSeq ORF:	1356
Synonyms:	HSCP1; RISC
Summary:	May be involved in vascular wall and kidney homeostasis.[UniProtKB/Swiss-Prot Function]
Protein Families:	Druggable Genome, Protease, Secreted Protein

Product images:



Coomassie blue staining of purified SCPEP1 protein (Cat# [TP310080]). The protein was produced from HEK293T cells transfected with SCPEP1 cDNA clone (Cat# [RC210080]) using MegaTran 2.0 (Cat# [TT210002]).