

## Product datasheet for **TP310080L**

### RISC (SCPEP1) (NM\_021626) Human Recombinant Protein

#### Product data:

**Product Type:** Recombinant Proteins

**Description:** Recombinant protein of human serine carboxypeptidase 1 (SCPEP1), 1 mg

**Species:** Human

**Expression Host:** HEK293T

**Expression cDNA Clone  
or AA Sequence:** >RC210080 protein sequence  
**Red**=Cloning site **Green**=Tags(s)

MELALRRSPVPRWLLLLPLLLGLNAGAVIDWPTEEGKEVWDYVTVRKDAYMFWWLYATNSCKNFSELPL  
VMWLQGGPGGSSTGFGNFEEIGPLDSDLKPRKTTWLQAASLLFVDNPNVGTGFSYVNGSGAYAKDLAMVAS  
DMMVLLKTFFSCHKEFQTPFYIFSESYGGKMAAGIGLELYKAIQRGTIKCNFAGVALGDSWISPVDSVL  
SWGPLYSMSLLEDKGLAEVSKVAEQVLNAVNGLYREATELWGKAEMIEQNTDGVNFYNILTKSTPTS  
TMESSELEFTQSHLVCLCQRHVRHLQRDALSQLMNGPIRKKLKIIPEDQSWGQATNVFNMEEDFMKPVV  
SIVDELLEAGINVTYNGQLDLIVDTMGQEAWVRKLLKWPPELKFSQLKWKALYSDPKSLETSFAFKSYKN  
LAFYWILKAGHMVPSDQGDMAKMMRLVTQQE

**TRTRPLEQKLISEEDLAANDILDYKDDDDKV**

**Tag:** C-Myc/DDK

**Predicted MW:** 47.9 kDa

**Concentration:** >0.05 µg/µL as determined by microplate BCA method

**Purity:** > 80% as determined by SDS-PAGE and Coomassie blue staining

**Buffer:** 25 mM Tris-HCl, 100 mM glycine, pH 7.3, 10% glycerol

**Preparation:** Recombinant protein was captured through anti-DDK affinity column followed by conventional chromatography steps.

**Note:** For testing in cell culture applications, please filter before use. Note that you may experience some loss of protein during the filtration process.

**Storage:** Store at -80°C.

**Stability:** Stable for 12 months from the date of receipt of the product under proper storage and handling conditions. Avoid repeated freeze-thaw cycles.

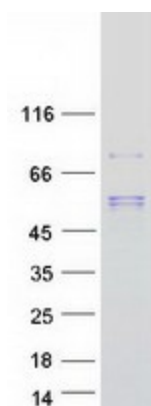
**RefSeq:** [NP\\_067639](#)



[View online »](#)

Locus ID:	59342
UniProt ID:	<a href="#">Q9HB40</a> , <a href="#">Q9H2J9</a>
RefSeq Size:	1952
Cytogenetics:	17q22
RefSeq ORF:	1356
Synonyms:	HSCP1; RISC
Summary:	May be involved in vascular wall and kidney homeostasis.[UniProtKB/Swiss-Prot Function]
Protein Families:	Druggable Genome, Protease, Secreted Protein

### Product images:



Coomassie blue staining of purified SCPEP1 protein (Cat# [TP310080]). The protein was produced from HEK293T cells transfected with SCPEP1 cDNA clone (Cat# [RC210080]) using MegaTran 2.0 (Cat# [TT210002]).